



# Gas supply status report

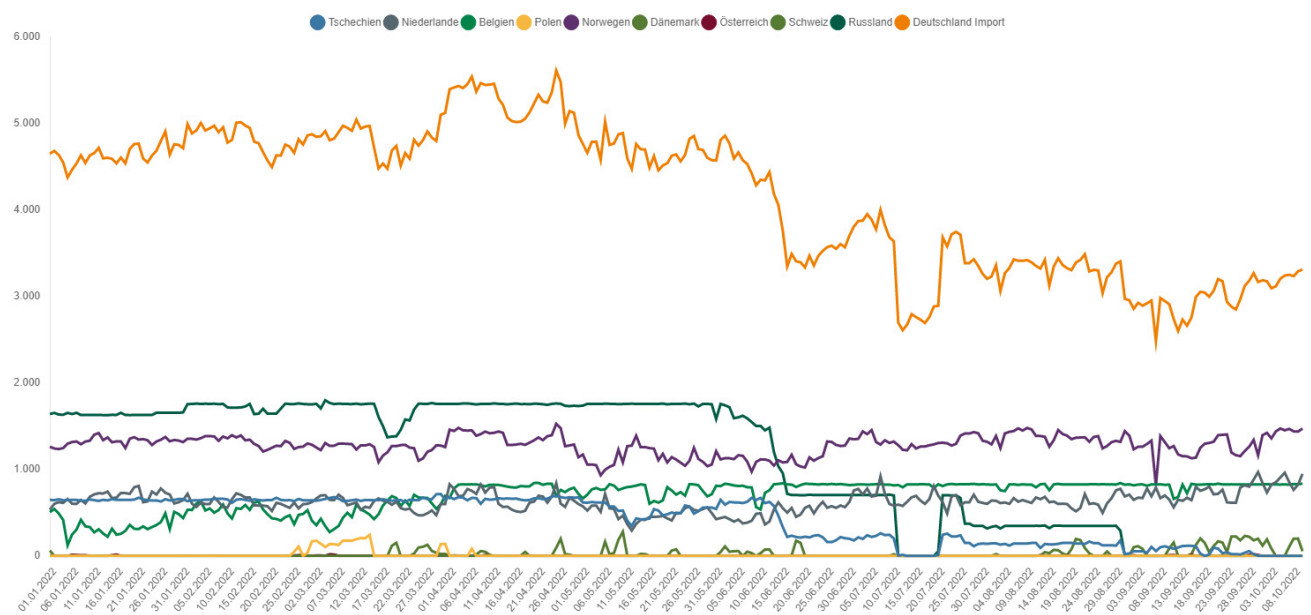
As at: 1pm, 11 October 2022

- Since 23 June 2022 the alert level of the gas emergency plan has been in place.
- The situation is tense and a further worsening of the situation cannot be ruled out. The gas supply in Germany is, however, currently stable. At present, the security of supply in Germany continues to be safeguarded. The Bundesnetzagentur is monitoring the situation carefully and is in close contact with the system operators.
- The events at the Nord Stream 1 and 2 pipelines are not affecting gas supply. No gas has been delivered through Nord Stream 1 since the beginning of September anyway, and Nord Stream 2 has never been put into operation. The German Federal Ministry of the Interior and Community, as the ministry responsible for security and counter-sabotage issues, is in close contact with the German security authorities and the Danish and Swedish partners in connection with the events.
- Gas continues to be injected into storage. The total storage level in Germany is 94.44%. The storage level at the Rehden facility is 82.23%.
- Wholesale prices are fluctuating greatly but remain at very high levels. Companies and private consumers must expect a considerable increase in gas prices.
- The Bundesnetzagentur explicitly emphasises the importance of using gas economically.

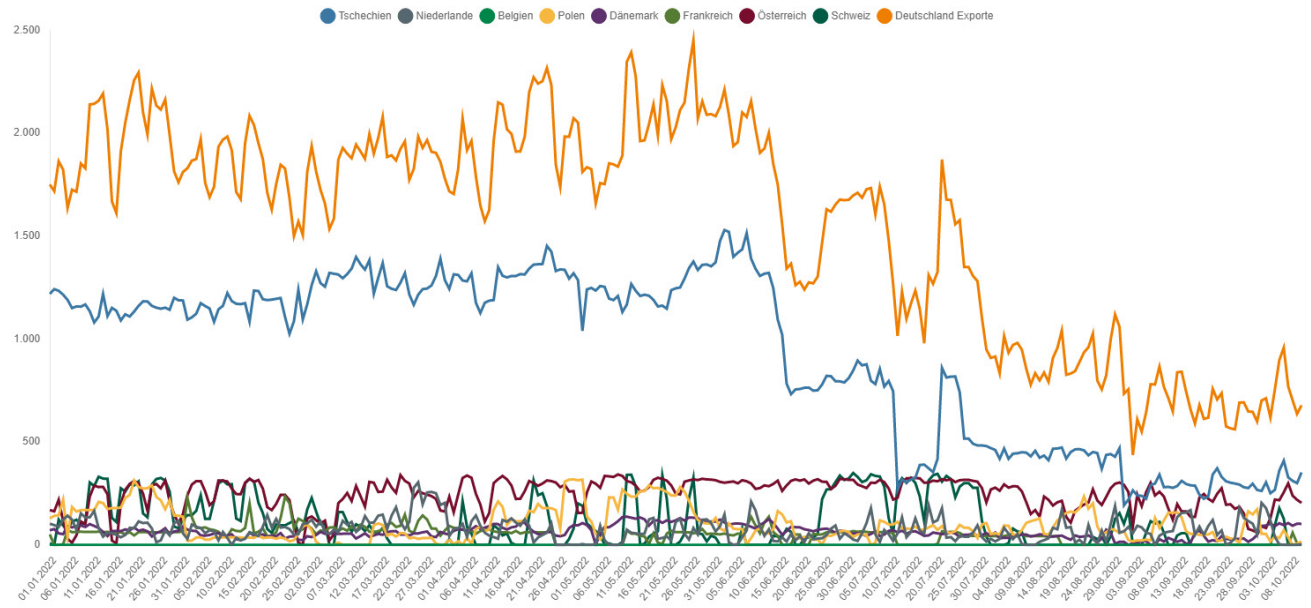
## 1. Gas flows

### 1.1 Gas imports

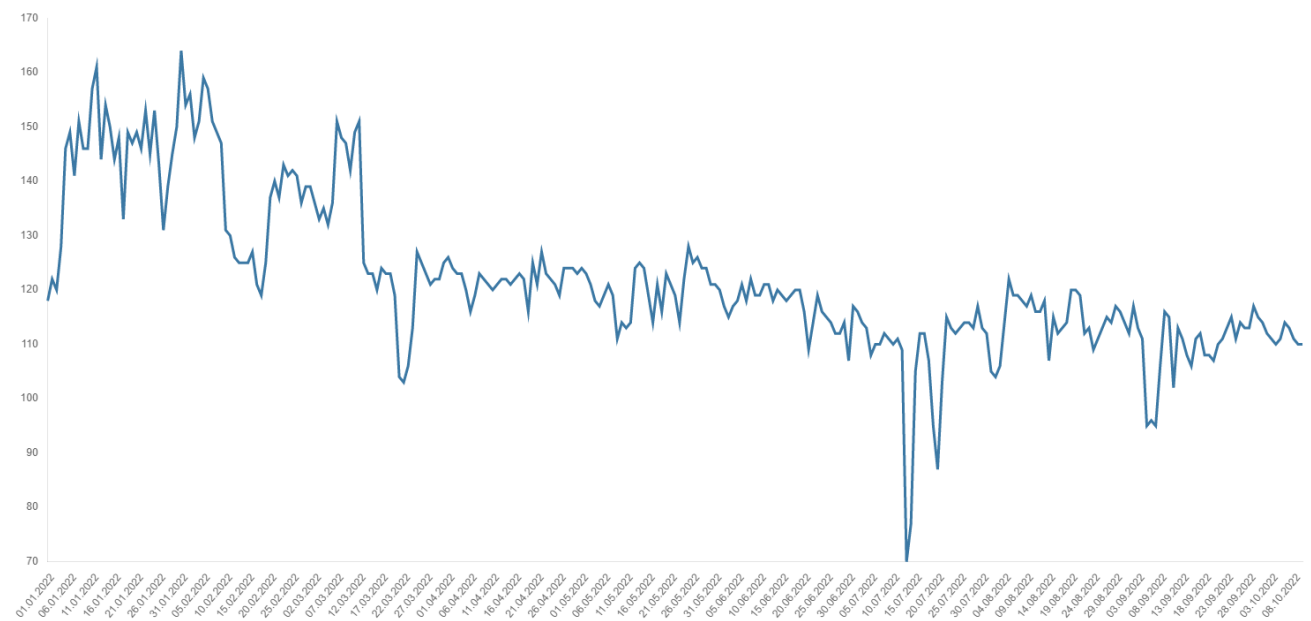
(GWh/day)



## 1.2 Gas exports (GWh/day)



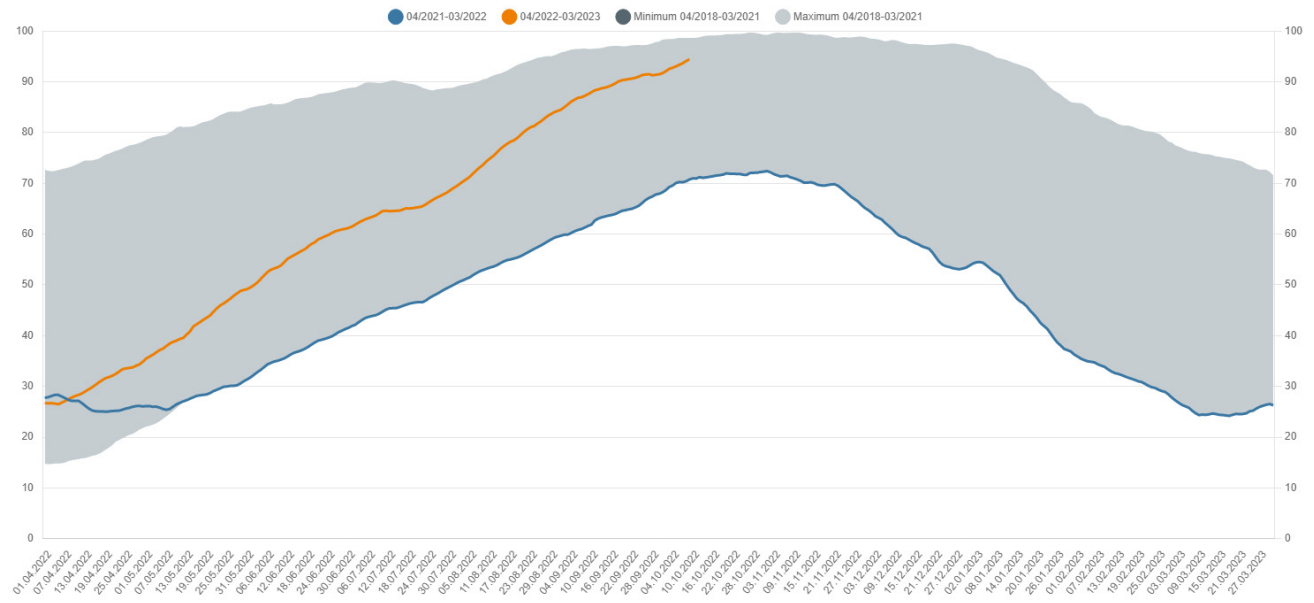
## 1.3 Gas production in Germany (GWh/day)



## 2. Storage levels in Germany

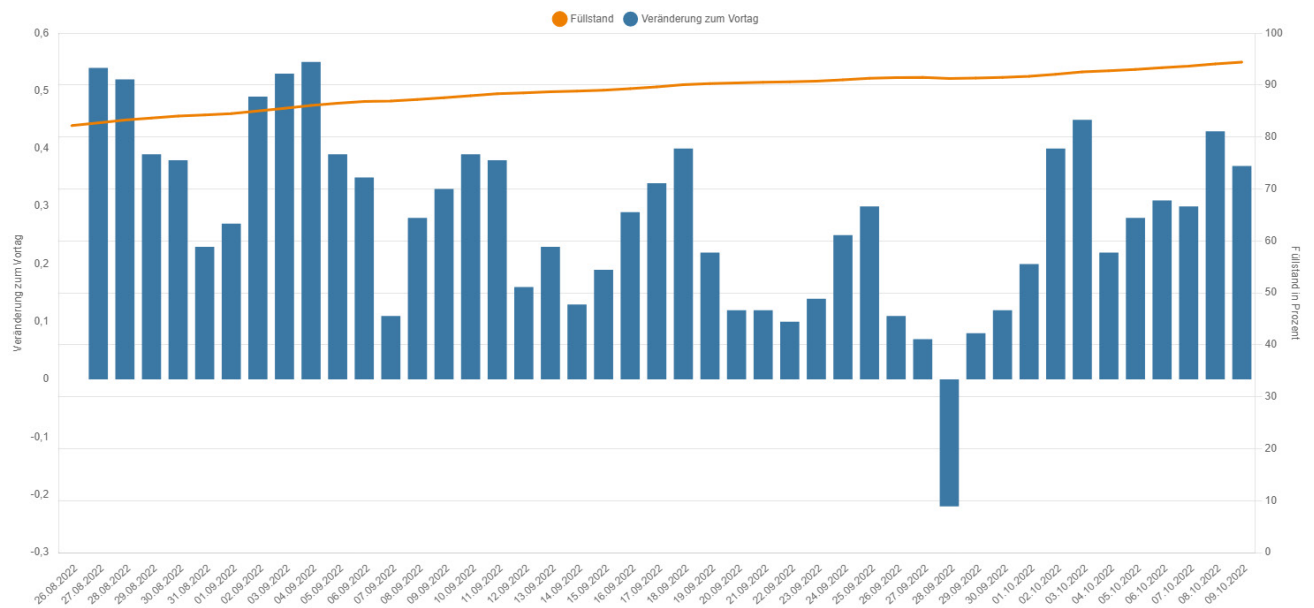
### 2.1 Development of storage levels in Germany

(%)



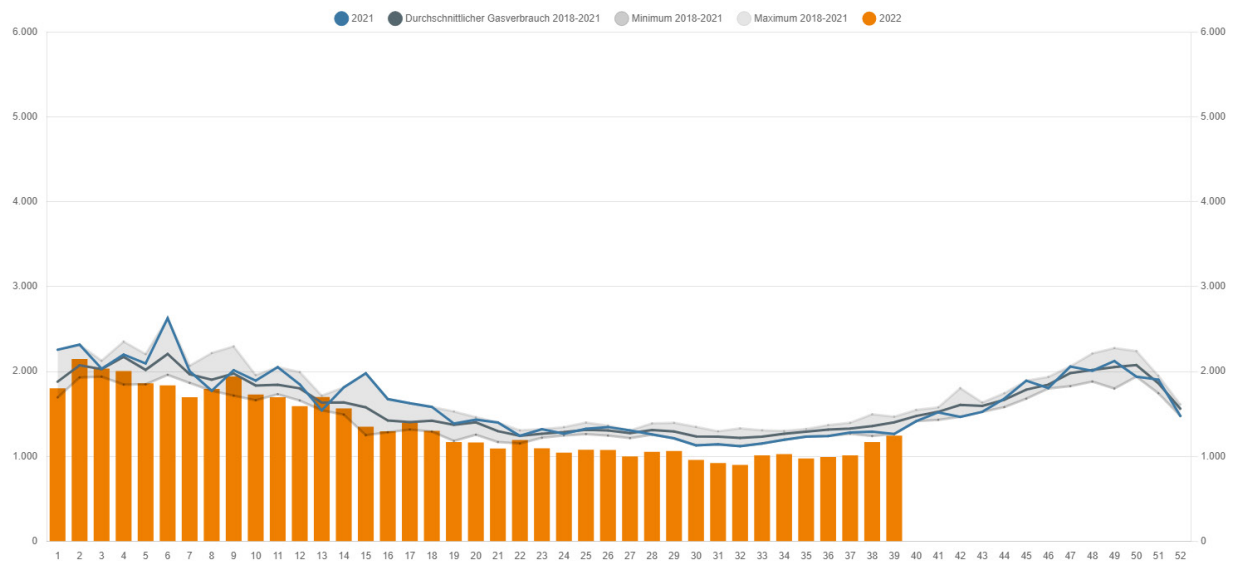
### 2.2 Gas storage levels in Germany: daily storage level and change in storage levels

(percentage points)

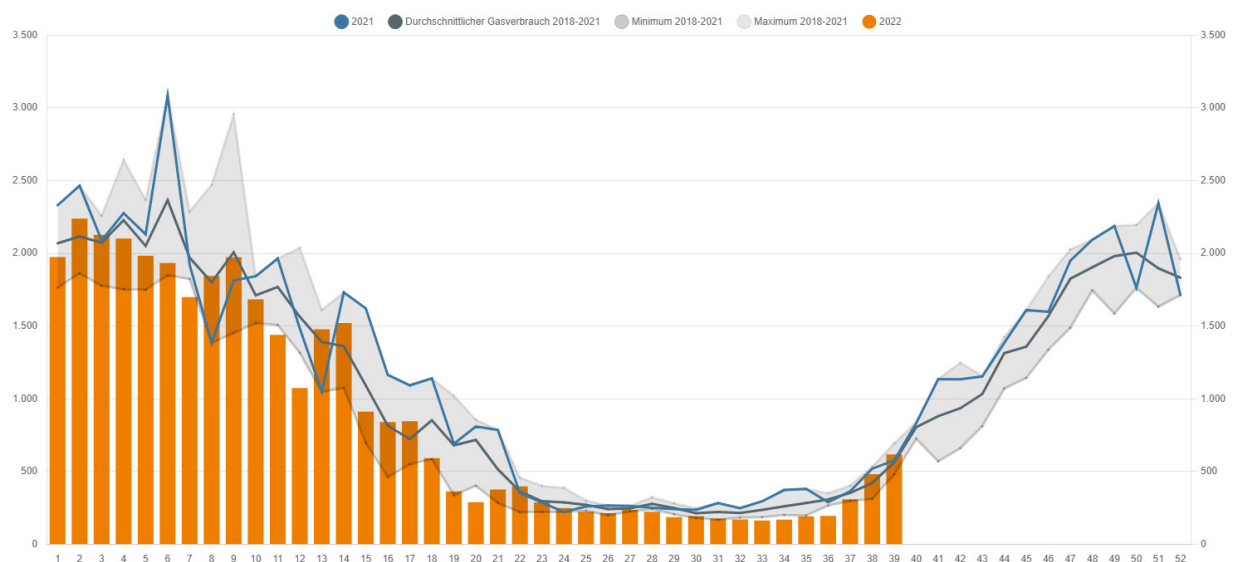


### 3. Consumption of natural gas

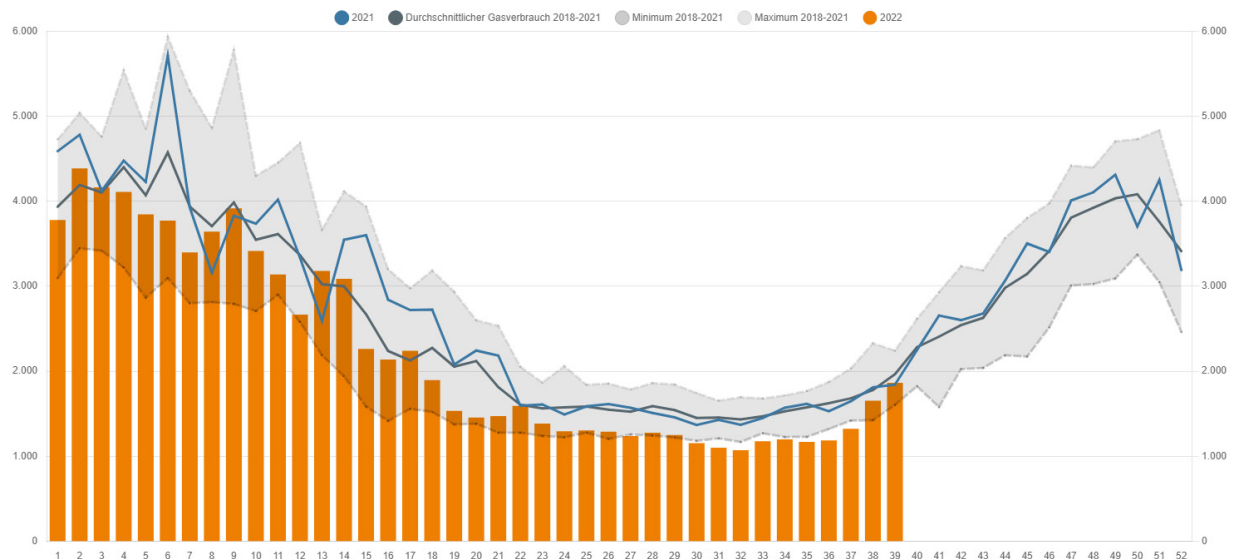
#### 3.1 Gas consumption of industrial customers (weekly average) (GWh/day)



#### 3.2 Gas consumption of household and commercial customers (weekly average) (GWh/day)

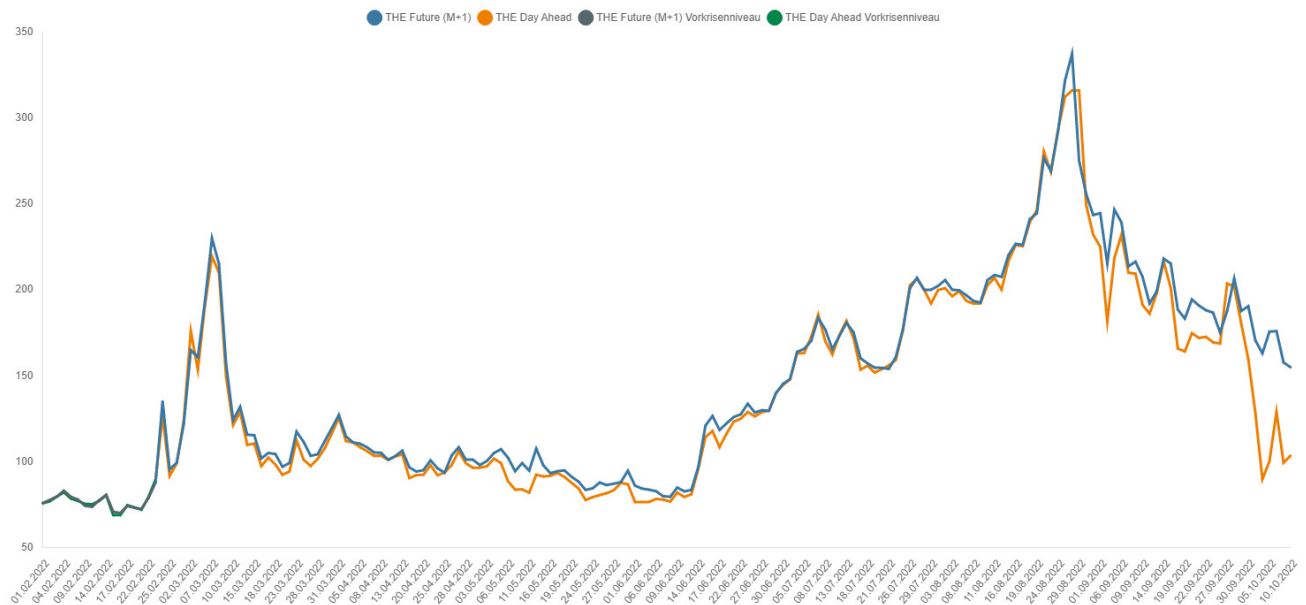


#### 3.3 Gas consumption in Germany (weekly average) (GWh/day)



## 4. Gas price

### 4.1 Wholesale gas prices (€/MWh)



## Contact

Explanations of the charts and further information and data on current gas supply can be found here:  
[www.bnetza.de/current-gassupply](http://www.bnetza.de/current-gassupply)

If you have any questions or comments on the status report, please contact:  
[pressestelle@bnetza.de](mailto:pressestelle@bnetza.de)

This report does not constitute a determination by the Bundesnetzagentur within the meaning of section 24(1) sentence 1 of the German Energy Security of Supply Act (EnSiG).