



The charts below show only a selection of the most important data on the gas supply. Further data with interactive charts and additional information may be found (in German) online at:

www.bundesnetzagentur.de/aktuelle-gasversorgung

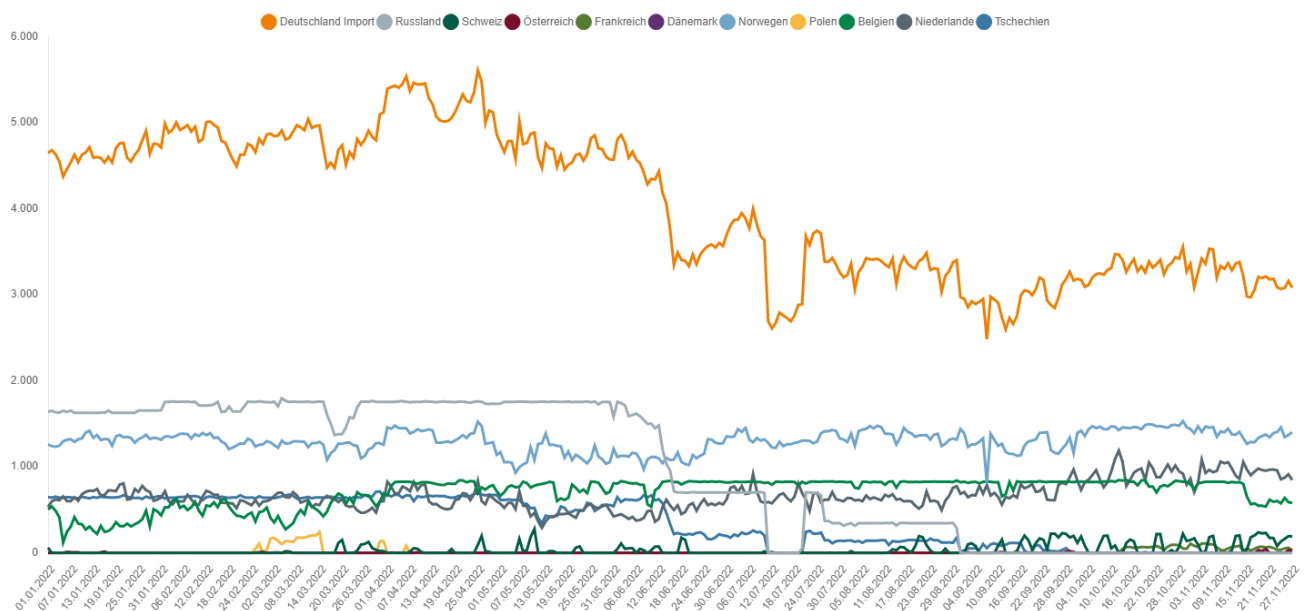
Gas supply status report

As at: 1pm, 28 November 2022

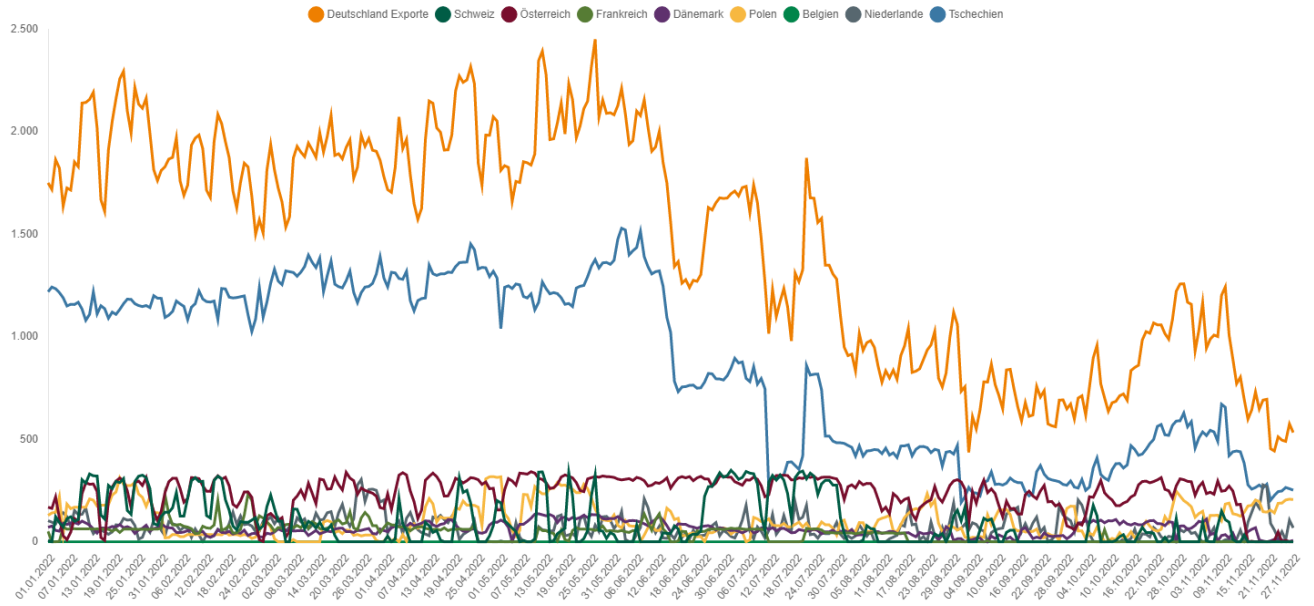
- Since 23 June 2022 the alert level of the gas emergency plan has been in place.
- The gas supply in Germany is currently stable. The security of supply is safeguarded at present. Overall, the Bundesnetzagentur still views the situation as tense and cannot rule out a further worsening of the situation. The Bundesnetzagentur is monitoring the situation carefully and is in close contact with the system operators.
- Due to planned maintenance work on the gas pipeline between Great Britain and Belgium, a change in Belgian imports is envisaged between 15 and 29 November 2022. In the view of the Bundesnetzagentur, based amongst others on information provided by market participants, the maintenance work will not have a negative impact on security of supply in Germany as it will be compensated by shifting other flows within the European gas transmission system.
- Small amounts of gas are being injected into storage. The total storage level in Germany is 98.79%. The storage level at the Rehden facility is 92.78%.
- Gas consumption in the week beginning 14 November 2022 was lower than average consumption in the past four years but up by nearly 28% compared with the previous week. Temperatures were 0.7°C lower than in the previous years.
- Wholesale prices are fluctuating greatly and have risen again recently. Businesses and private consumers must continue to adapt to a significantly higher price level.
- The Bundesnetzagentur stresses the need to save gas. Avoiding a national gas supply emergency this winter depends on three things: cutting gas consumption by at least 20%, LNG terminals starting operation at the beginning of next year, and the winter decrease in imports and the increase in exports – which are currently at a particularly low level – being relatively small.

1. Gas flows

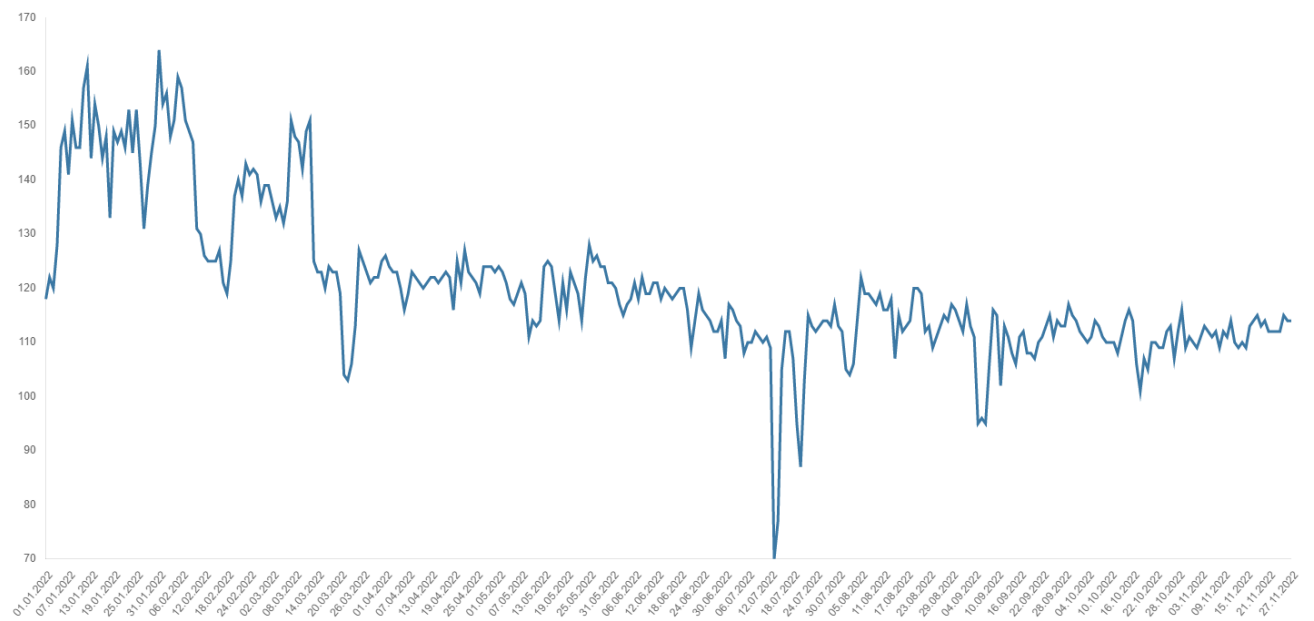
1.1 Gas imports (GWh/day)



1.2 Gas exports (GWh/day)

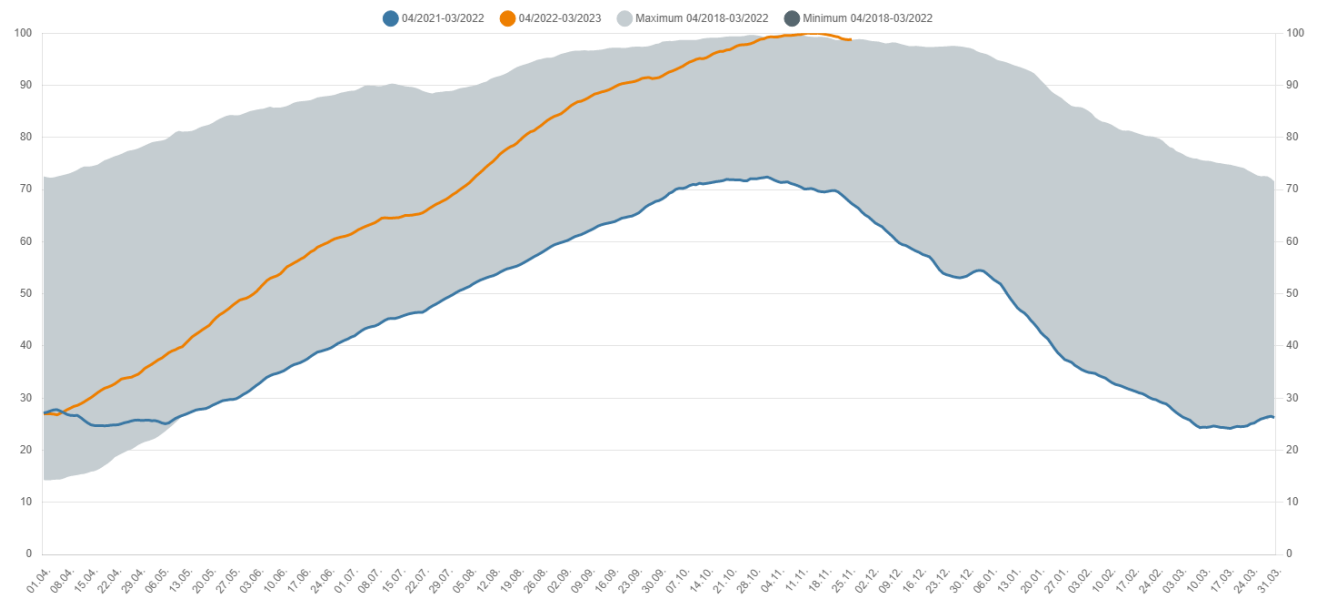


1.3 Gas production in Germany (GWh/day)

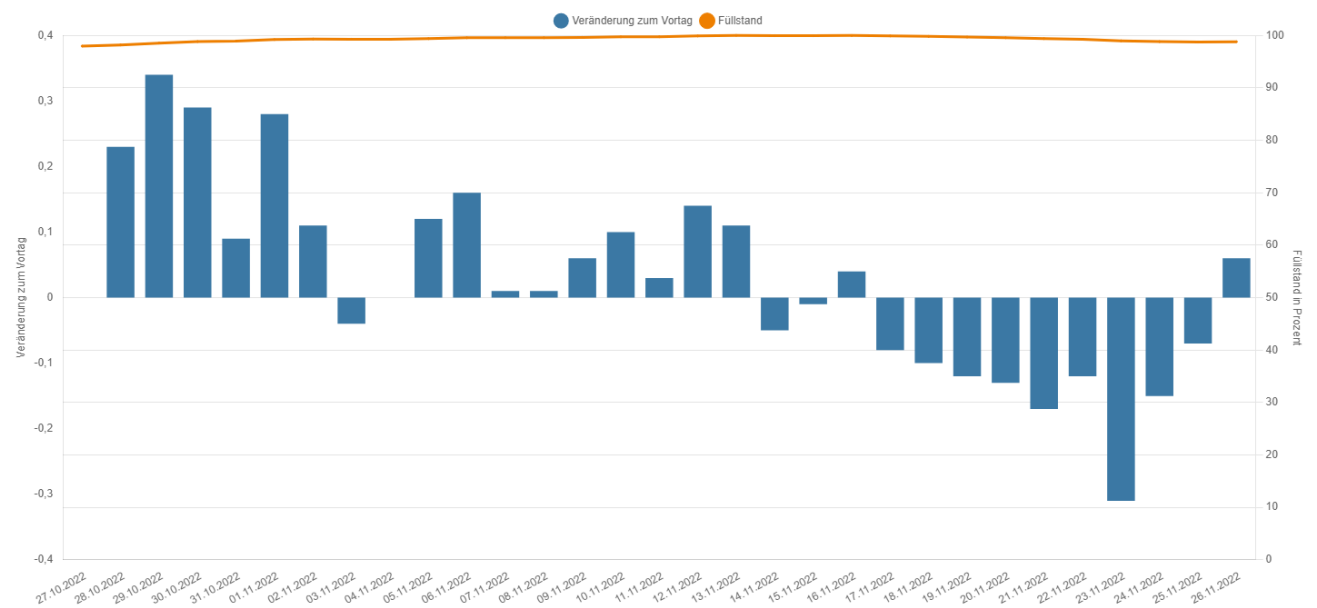


2. Storage levels in Germany

2.1 Development of storage levels in Germany (%)

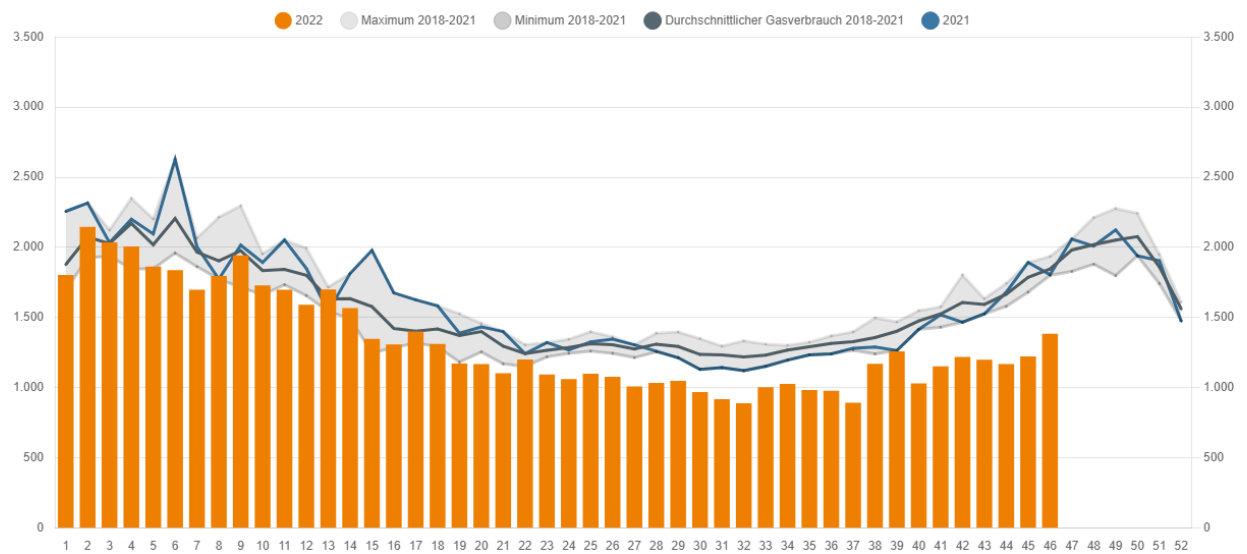


2.2 Gas storage levels in Germany: daily storage level and change in storage levels (percentage points)

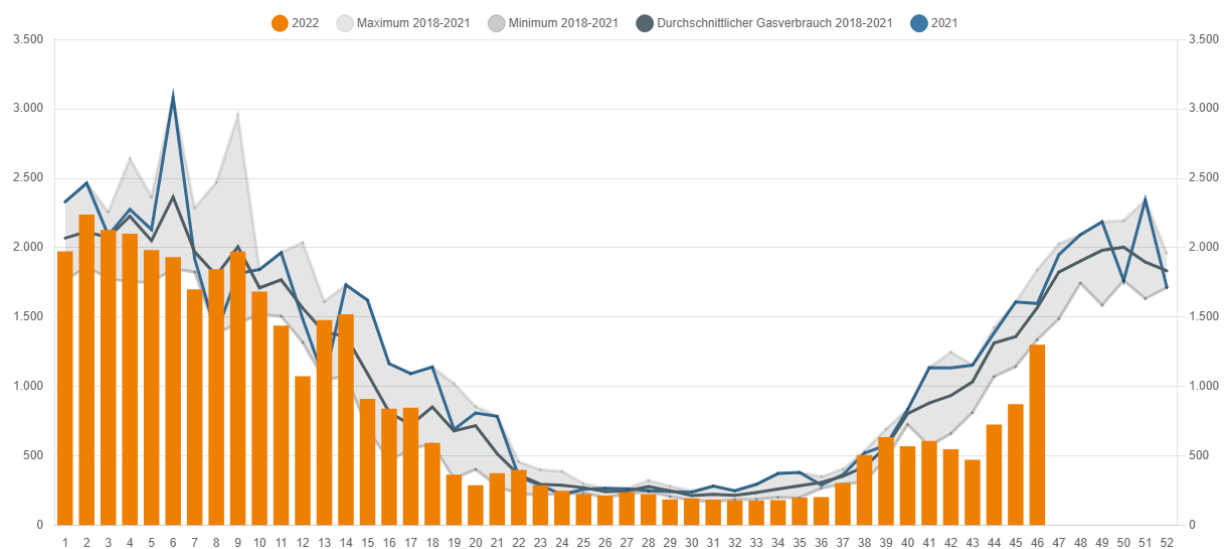


3. Consumption of natural gas

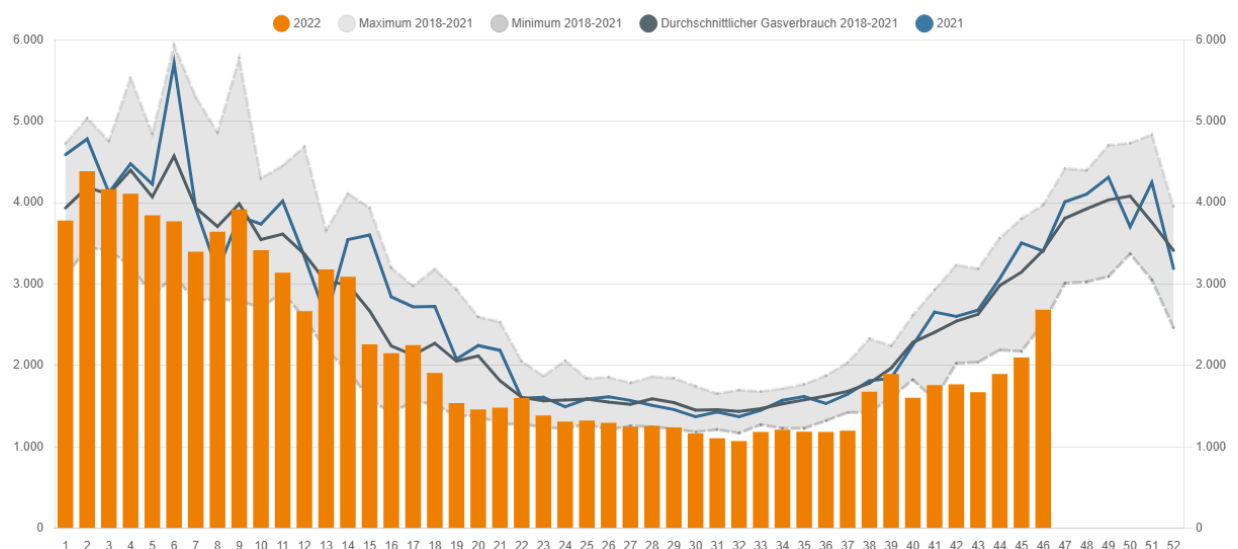
3.1 Gas consumption of industrial customers (weekly average) (GWh/day)



3.2 Gas consumption of household and commercial customers (weekly average) (GWh/day)

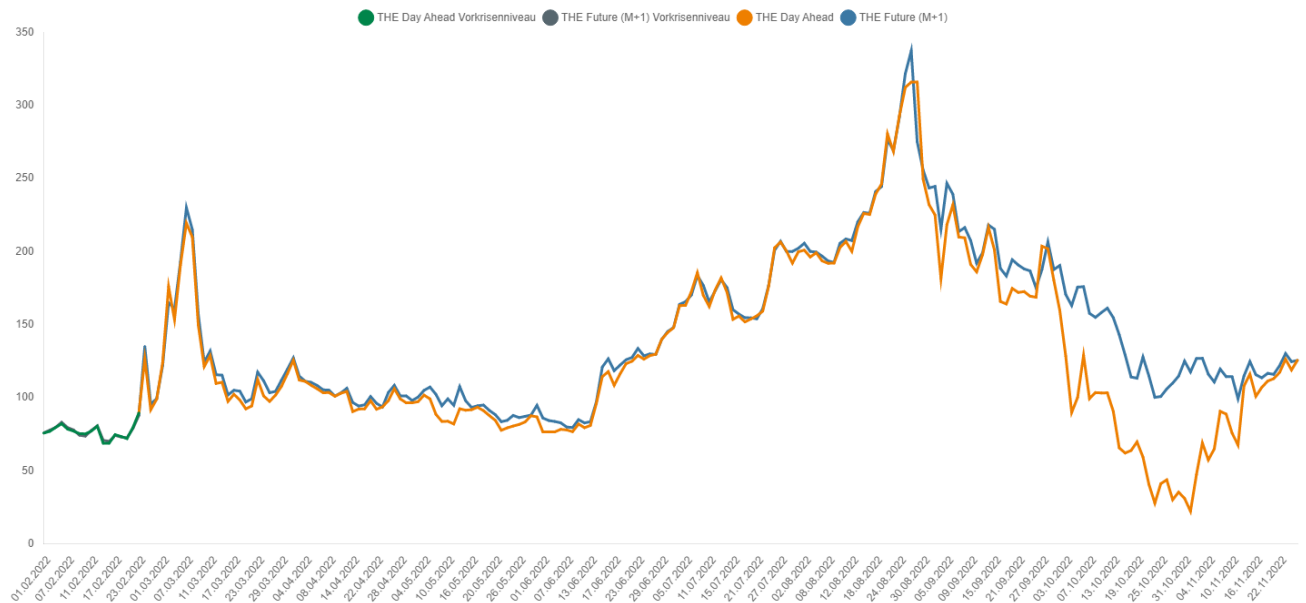


3.3 Gas consumption in Germany (weekly average) (GWh/day)



4. Gas price

4.1 Wholesale gas prices (€/MWh)



Contact

Explanations of the charts and further information and data on current gas supply can be found here:
www.bnetza.de/current-gassupply

If you have any questions or comments on the status report, please contact:
pressestelle@bnetza.de

This report does not constitute a determination by the Bundesnetzagentur within the meaning of section 24(1) sentence 1 of the German Energy Security of Supply Act (EnSiG).