



The charts below show only a selection of the most important data on the gas supply. Further data with interactive charts and additional information may be found (in German) online at:

[www.bundesnetzagentur.de/aktuelle-gasversorgung](https://www.bundesnetzagentur.de/aktuelle-gasversorgung)

# Gas supply status report

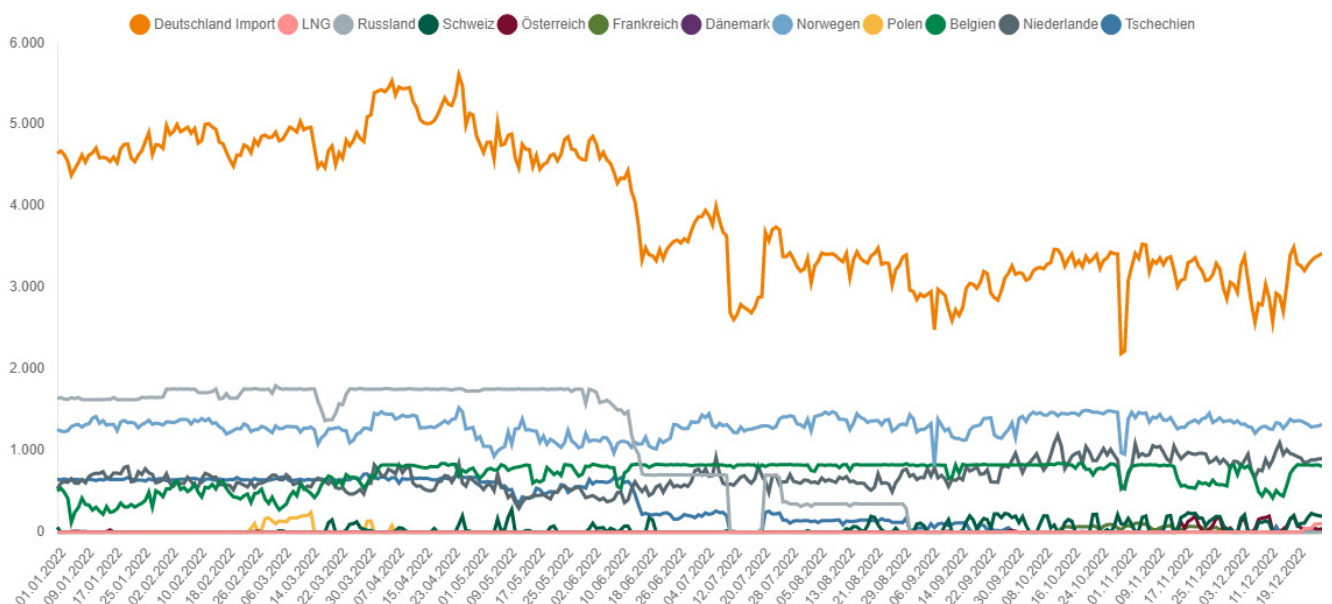
As at: 1pm, 27 December 2022

- Since 23 June 2022 the alert level of the gas emergency plan has been in place.
- The gas supply in Germany is currently stable. The security of supply is safeguarded at present. Overall, the Bundesnetzagentur still views the situation as tense and cannot rule out a further worsening of the situation. The Bundesnetzagentur is monitoring the situation carefully and is in close contact with the system operators.
- More gas is being injected into storage than withdrawn from it. The total storage level in Germany is 88.22%. The storage level at the Rehden facility is 90.57%.
- Gas consumption in the week beginning 12 December 2022 was 12% above the average consumption of the past four years and up by nearly 20% compared with the previous week. This means consumption was well above that needed to meet the gas saving target. Temperatures were 7.9°C lower than in the previous years.
- The temperature-adjusted consumption in the weeks beginning 5 December and 12 December was 12% lower than the reference value of the past four years and is thus in the critical range.
- Temperatures this week are forecast to be 6.82°C and thus back in the normal range for the time of year, so lower gas consumption is expected.
- Wholesale prices are fluctuating greatly and have recently seen a decrease. Businesses and private consumers must continue to adapt to a significantly higher price level.
- The Bundesnetzagentur stresses the need to save gas. Avoiding a national gas supply emergency this winter depends on three things: cutting gas consumption by at least 20%, LNG terminals starting operation at the beginning of next year, and the winter decrease in imports and the increase in exports – which are currently at a particularly low level – being relatively small.

## 1. Gas flows

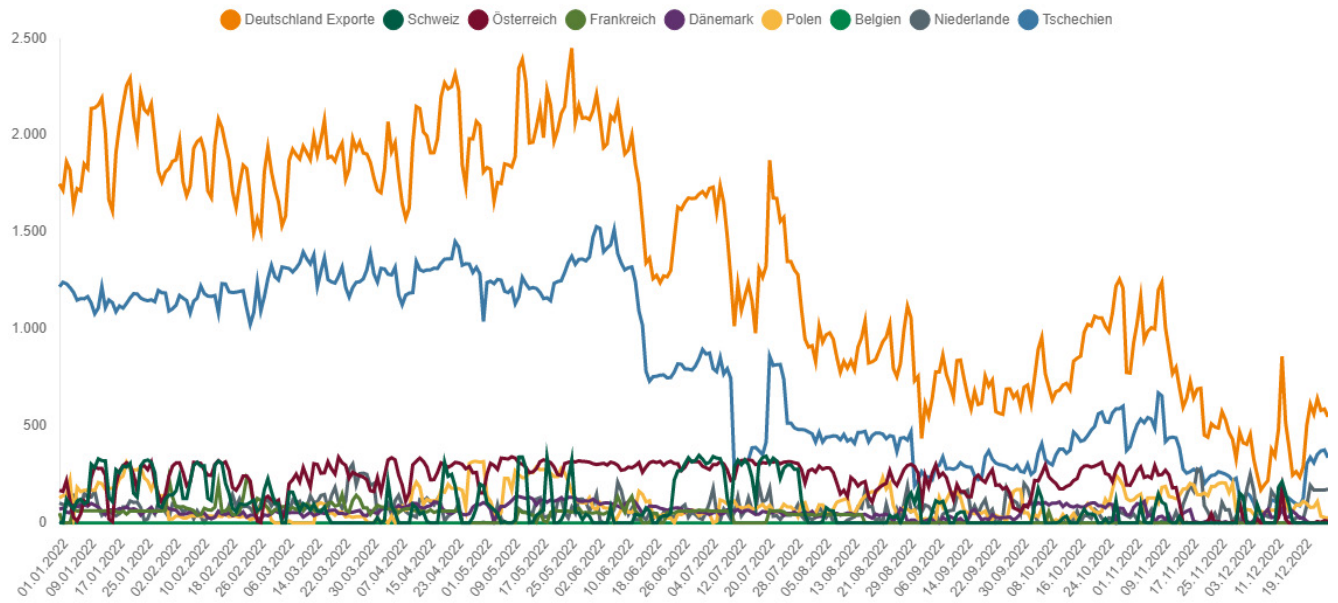
### 1.1 Gas imports

(GWh/day)



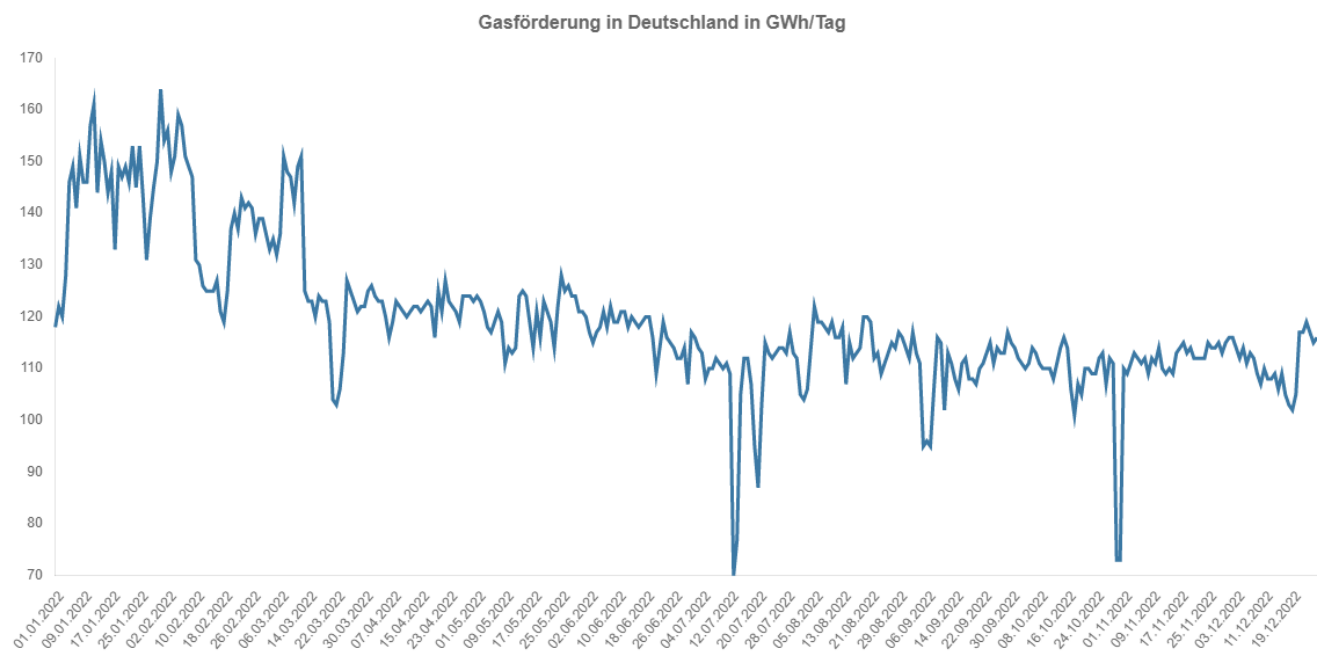
## 1.2 Gas exports

(GWh/day)



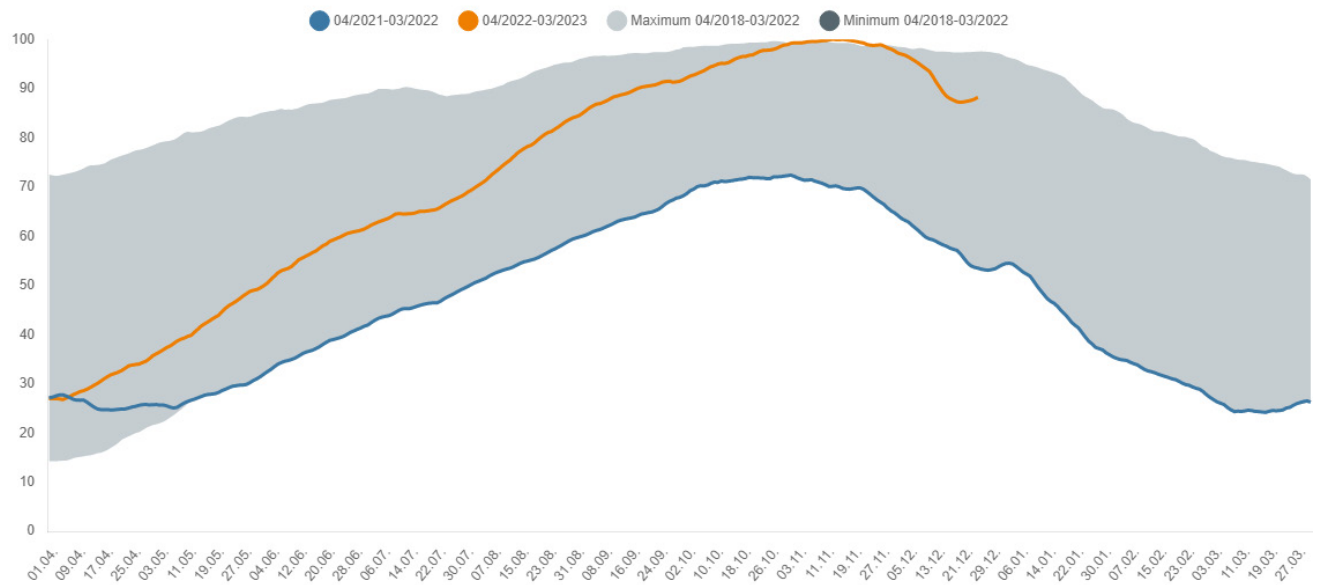
## 1.3 Gas production in Germany

(GWh/day)

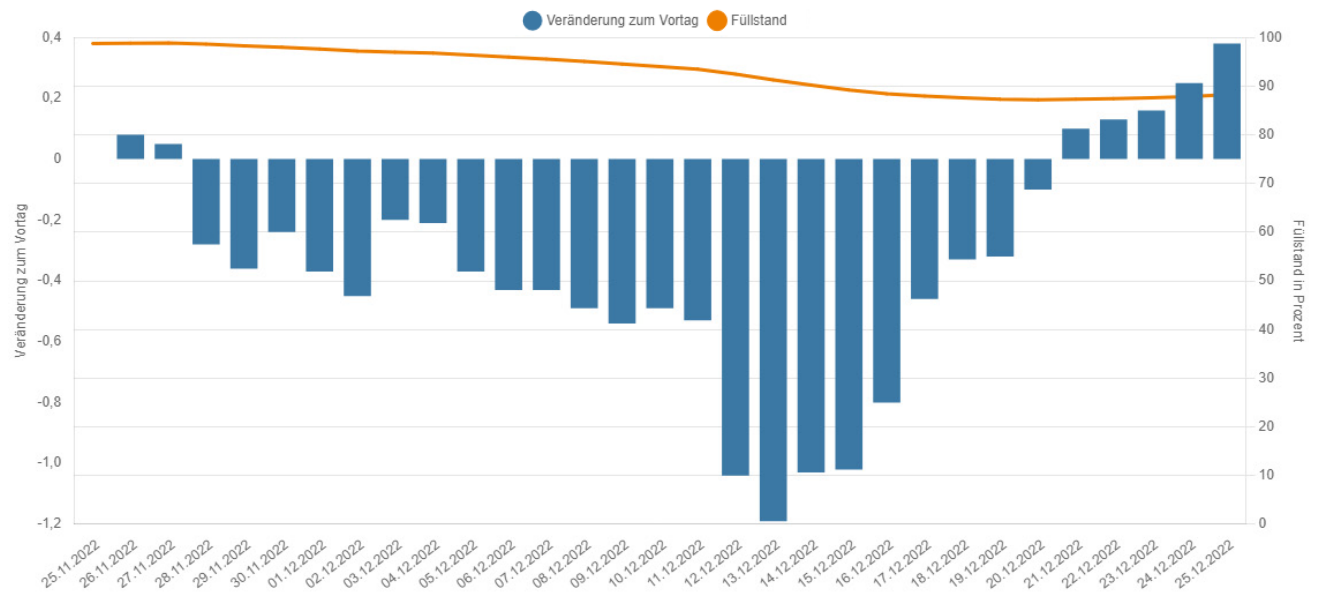


## 2. Storage levels in Germany

### 2.1 Development of storage levels in Germany (%)

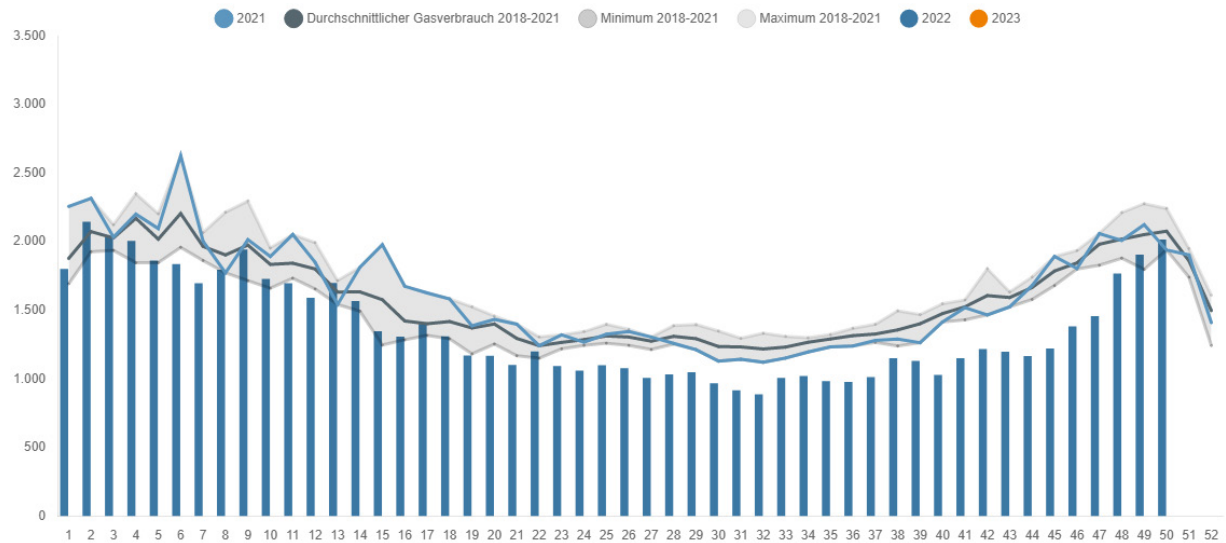


### 2.2 Gas storage levels in Germany: daily storage level and change in storage levels (percentage points)

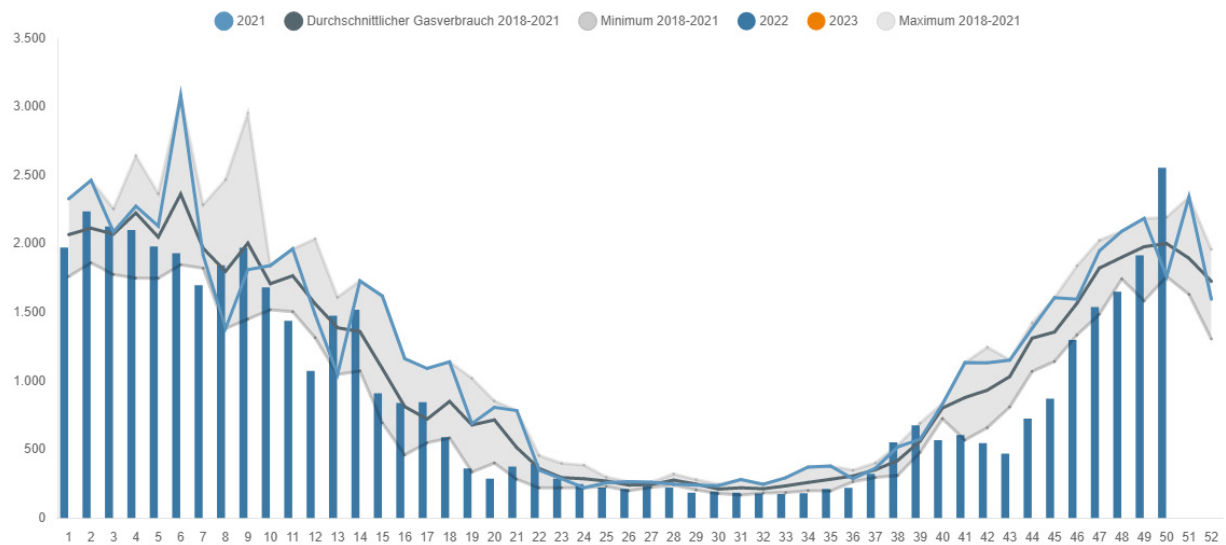


### 3. Consumption of natural gas

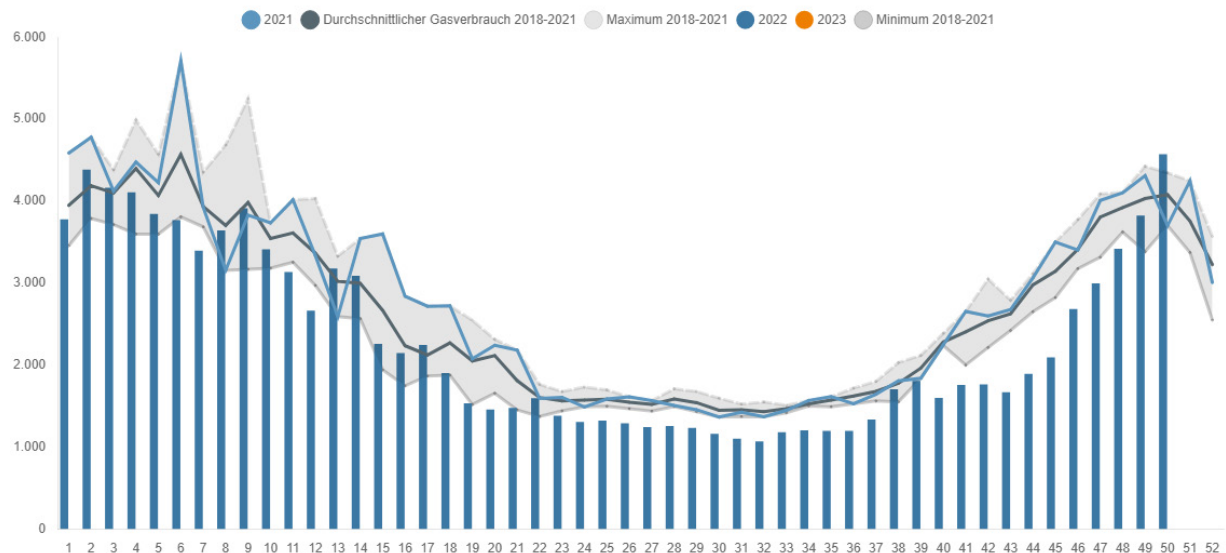
#### 3.1 Gas consumption of industrial customers (weekly average) (GWh/day)



#### 3.2 Gas consumption of household and commercial customers (weekly average) (GWh/day)

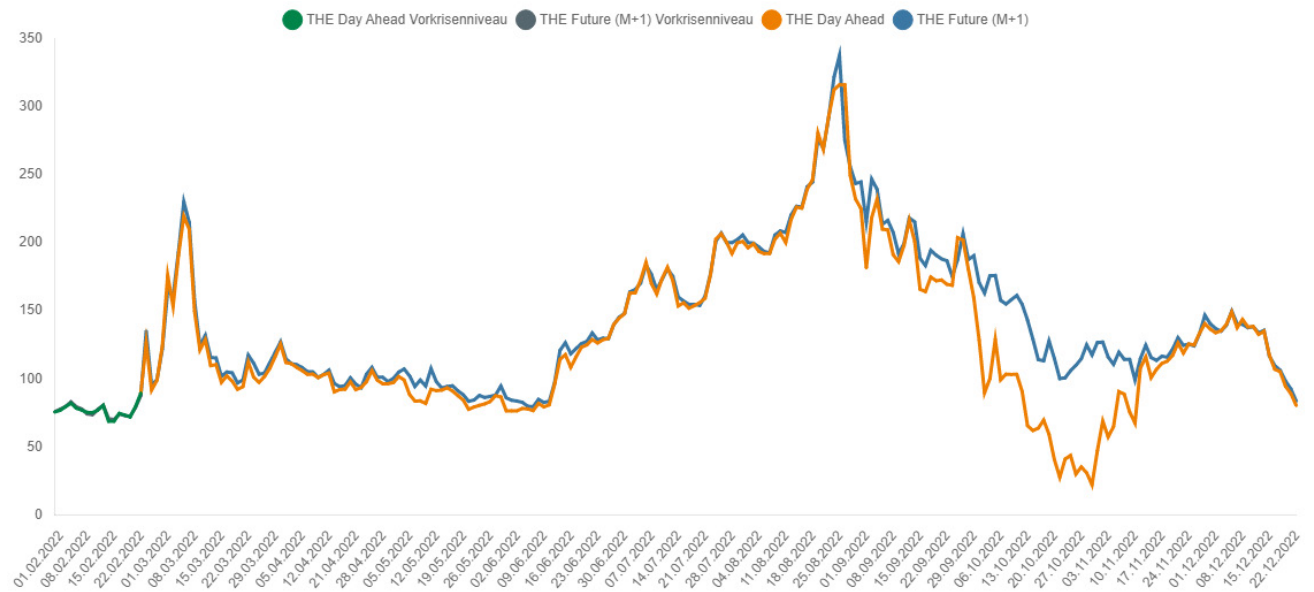


#### 3.3 Gas consumption in Germany (weekly average) (GWh/day)



## 4. Gas price

### 4.1 Wholesale gas prices (€/MWh)



## Contact

Explanations of the charts and further information and data on current gas supply can be found here:  
[www.bnetza.de/current-gassupply](http://www.bnetza.de/current-gassupply)

If you have any questions or comments on the status report, please contact:  
[pressestelle@bnetza.de](mailto:pressestelle@bnetza.de)

This report does not constitute a determination by the Bundesnetzagentur within the meaning of section 24(1) sentence 1 of the German Energy Security of Supply Act (EnSiG).