



The charts below show only a selection of the most important data on the gas supply. Further data with interactive charts and additional information may be found (in German) online at:

www.bundesnetzagentur.de/aktuelle-gasversorgung

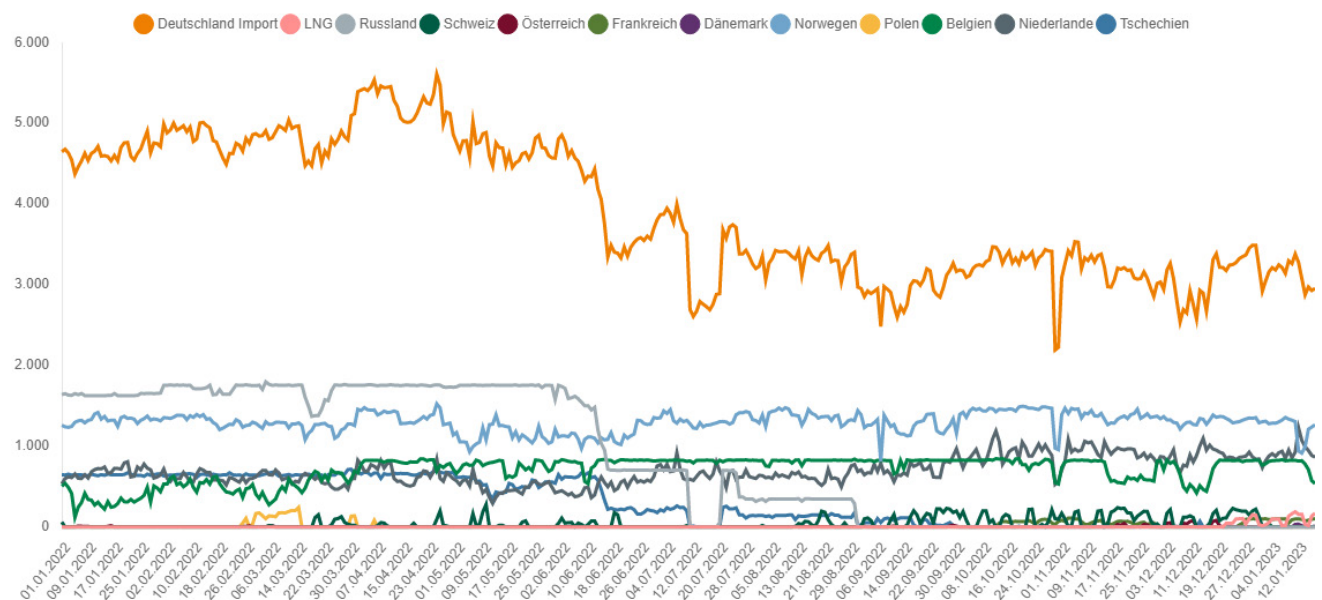
Gas supply status report

As at: 1pm, 18 January 2023

- Since 23 June 2022 the alert level of the gas emergency plan has been in place. The Bundesnetzagentur is monitoring the situation carefully and is in close contact with the system operators.
- The gas supply in Germany is stable. The security of supply is safeguarded. Overall, the Bundesnetzagentur views the situation as less tense than at the beginning of the winter. A gas deficit situation this winter is becoming increasingly unlikely. However, a worsening of the situation can still not be ruled out. The need to save gas is still important.
- Gas is mainly being taken out of storage. The total storage level in Germany is 89.87%. The storage level at the Rehden facility is 90.28%.
- Gas consumption in the week beginning 2 January 2023 was 38% below the average consumption for 2018 to 2021 and 8% higher than in the previous week. Temperatures were 5.1°C higher than in the previous years.
- Temperatures this week are forecast to be -0.3°C and thus the situation is tense, with higher gas consumption expected.
- The temperature-adjusted consumption in the weeks beginning 26 December 2022 and 2 January 2023 was 25% lower than the reference value for 2018 to 2021 and thus back at a stable level.
- Recently wholesale prices increased again slightly. Businesses and private consumers must continue to adapt to fluctuating prices and a significantly higher price level.

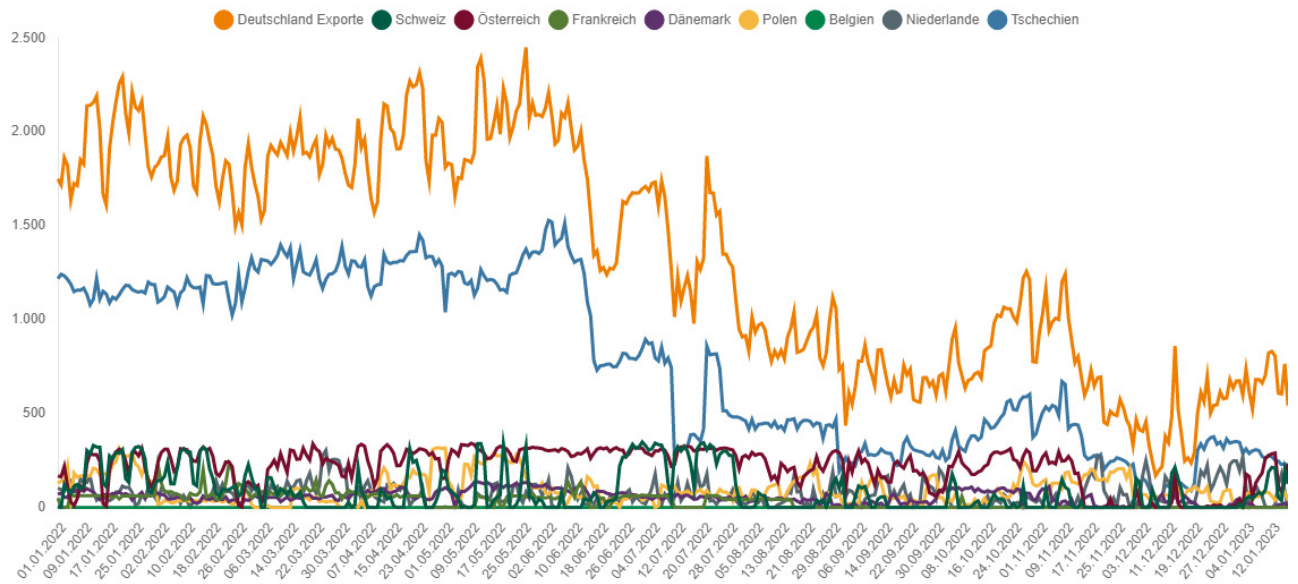
1. Gas flows

1.1 Gas imports (GWh/day)



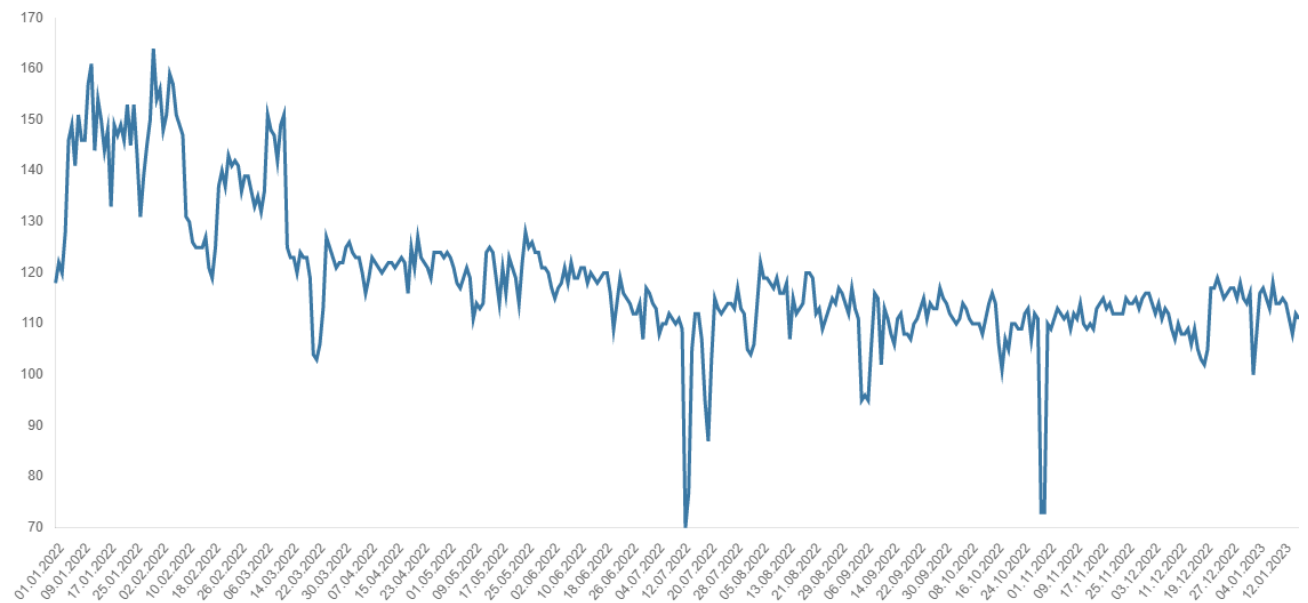
1.2 Gas exports

(GWh/day)



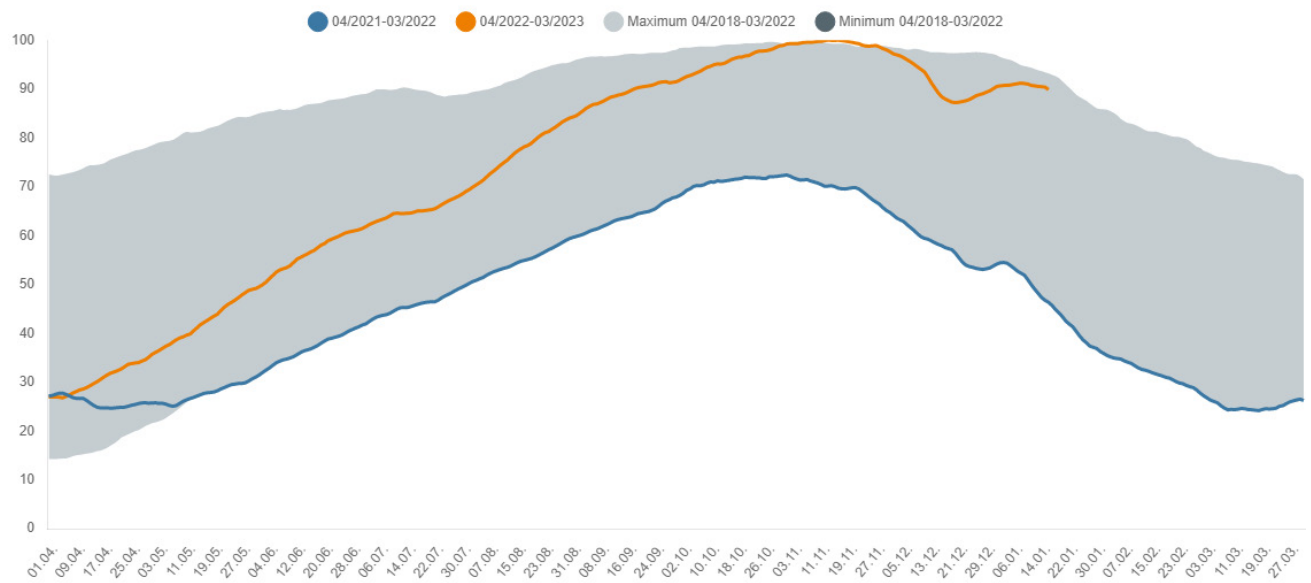
1.3 Gas production in Germany

(GWh/day)

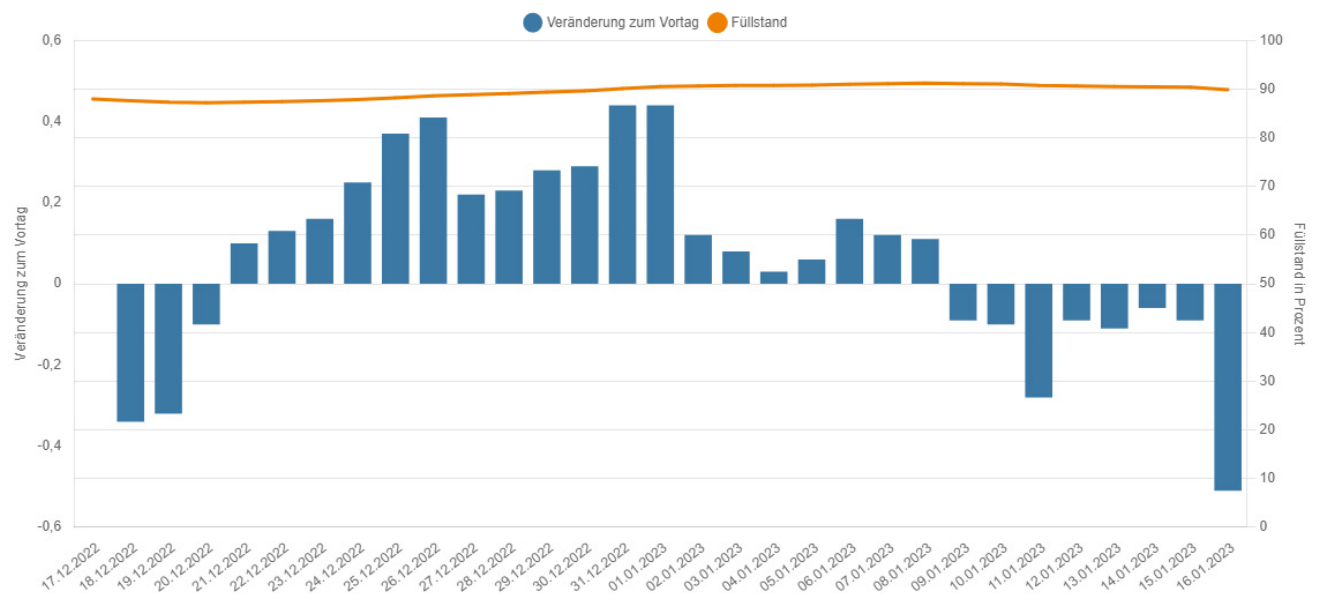


2. Storage levels in Germany

2.1 Development of storage levels in Germany (%)

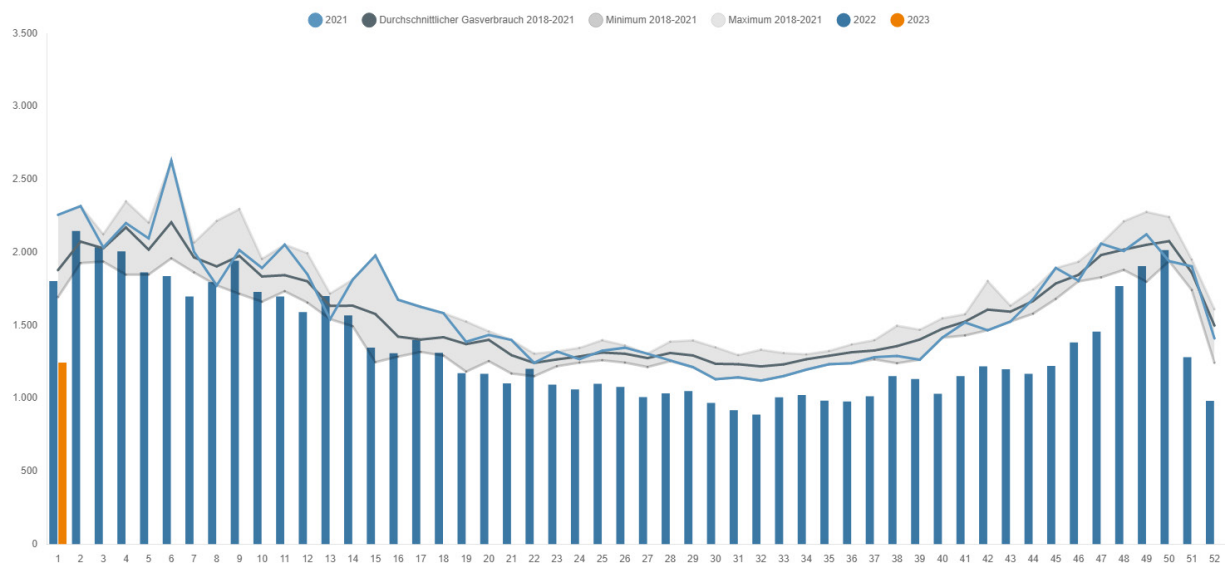


2.2 Gas storage levels in Germany: daily storage level and change in storage levels (percentage points)

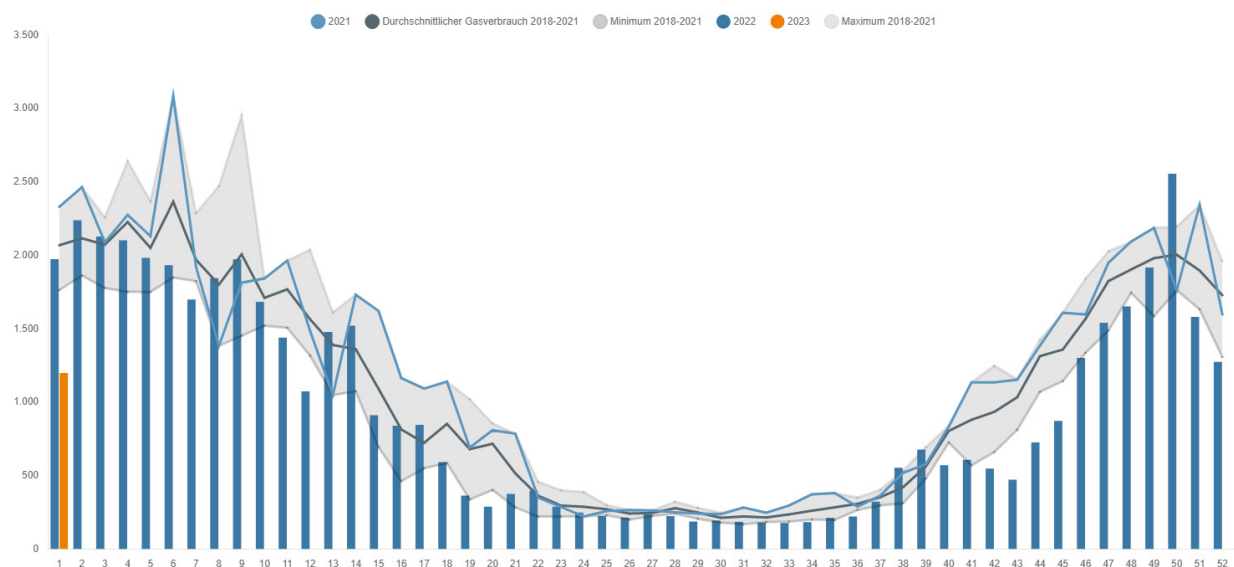


3. Consumption of natural gas

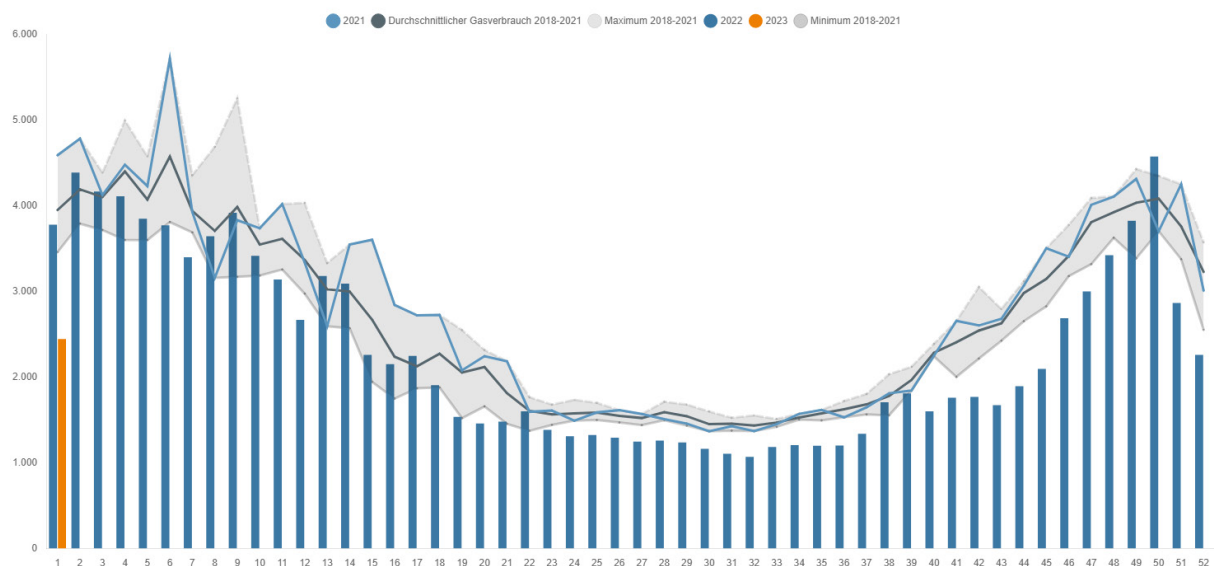
3.1 Gas consumption of industrial customers (weekly average) (GWh/day)



3.2 Gas consumption of household and commercial customers (weekly average) (GWh/day)

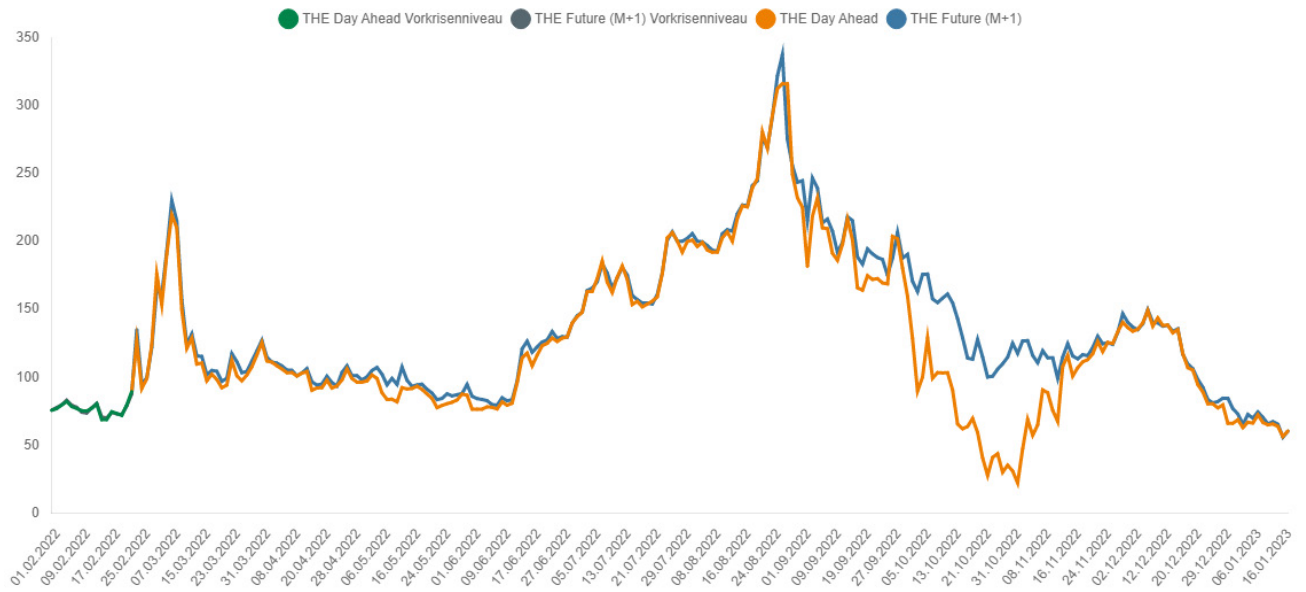


3.3 Gas consumption in Germany (weekly average) (GWh/day)



4. Gas price

4.1 Wholesale gas prices (€/MWh)



Contact

Explanations of the charts and further information and data on current gas supply can be found here:
www.bnetza.de/current-gassupply

If you have any questions or comments on the status report, please contact:
pressestelle@bnetza.de

This report does not constitute a determination by the Bundesnetzagentur within the meaning of section 24(1) sentence 1 of the German Energy Security of Supply Act (EnSiG).