



The charts below show only a selection of the most important data on the gas supply. Further data with interactive charts and additional information may be found (in German) online at:

www.bundesnetzagentur.de/aktuelle-gasversorgung

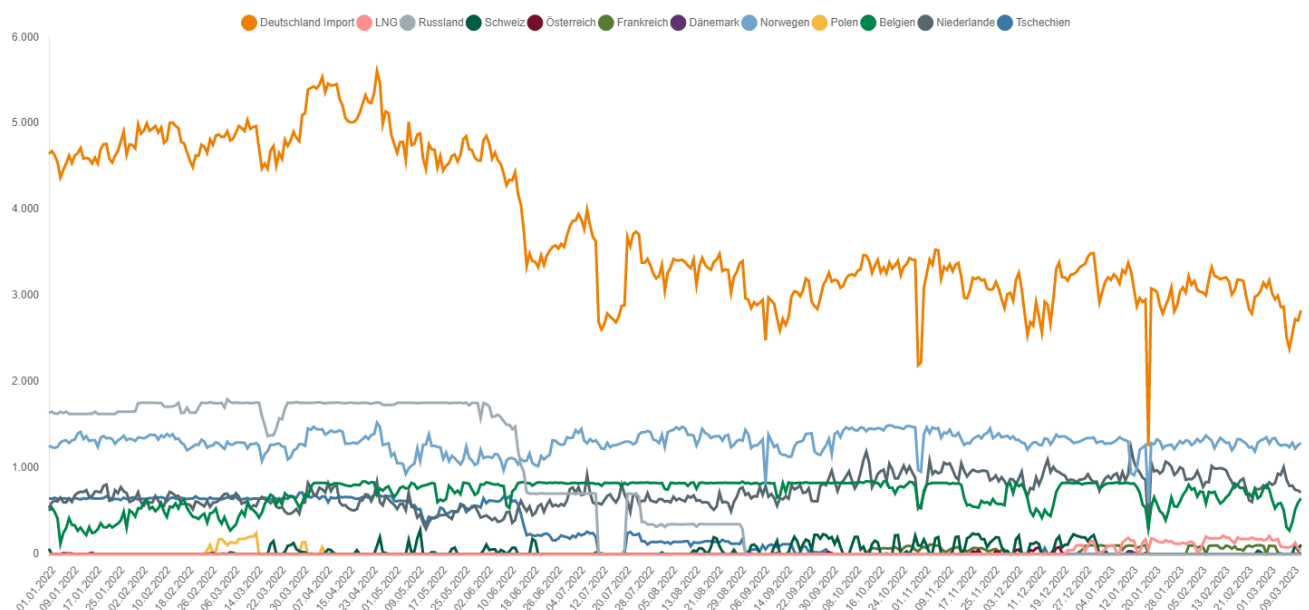
Gas supply status report

As at: 1pm, 13 March 2023

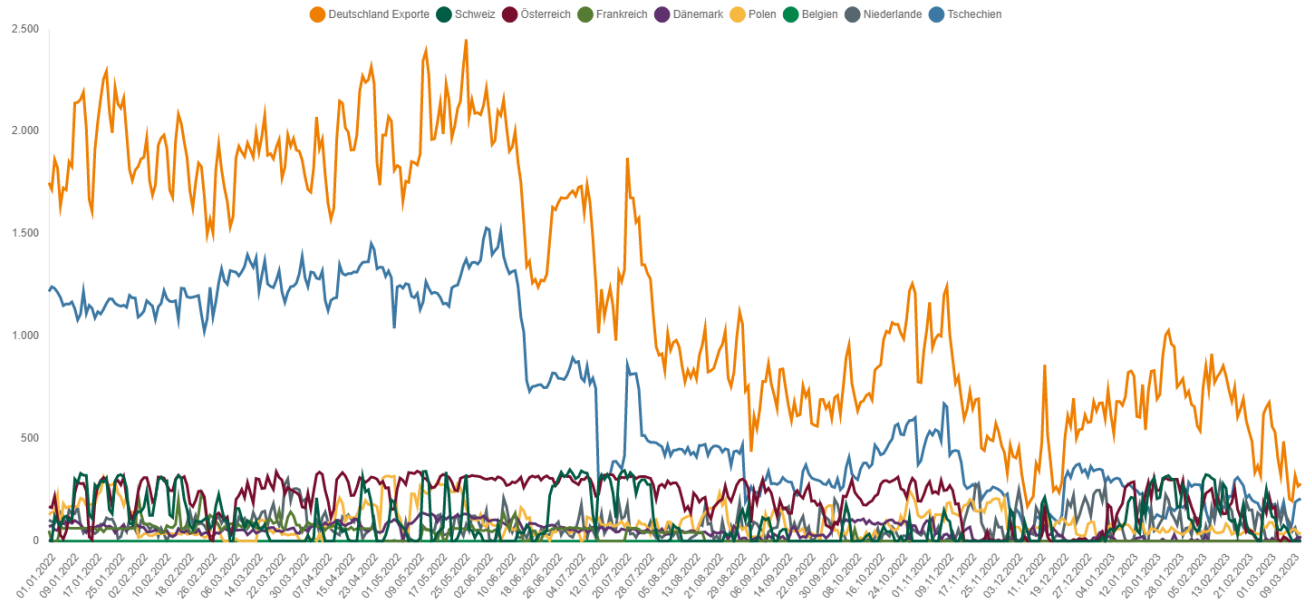
- Since 23 June 2022 the alert level of the gas emergency plan has been in place. The Bundesnetzagentur is monitoring the situation carefully and is in close contact with the system operators.
- The gas supply in Germany is stable. The security of supply is safeguarded. Overall, the Bundesnetzagentur views the situation as less tense than at the beginning of the winter. It is unlikely that there will be a gas deficit situation this winter. At the same time, preparing for the 2023-2024 winter is a key challenge. It is therefore still important to save gas.
- Gas is mainly being taken out of storage. The total storage level in Germany is 64.35%.
- Gas consumption in the week beginning 27 February 2023 was 7.7% below the average consumption for 2018 to 2021 and 21.3% higher than in the previous week. Temperatures were 1.6°C lower than in the previous years.
- The temperature-adjusted consumption is 11.6% lower than the reference value for 2018 to 2021 and thus in the critical range.
- Temperatures this week are forecast to be 7.37°C and thus back in the normal range for the time of year.
- Wholesale prices have decreased in the last few weeks. Businesses and private consumers must continue to adapt to fluctuating prices and a higher price level.

1. Gas flows

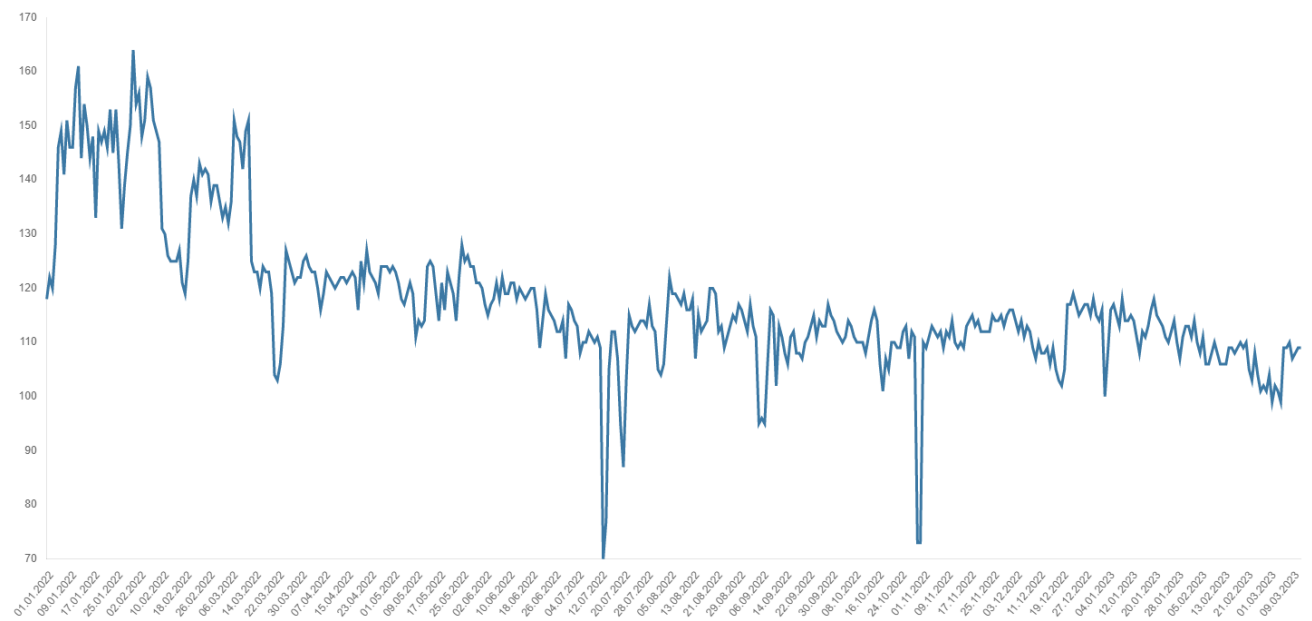
1.1 Gas imports (GWh/day)



1.2 Gas exports (GWh/day)

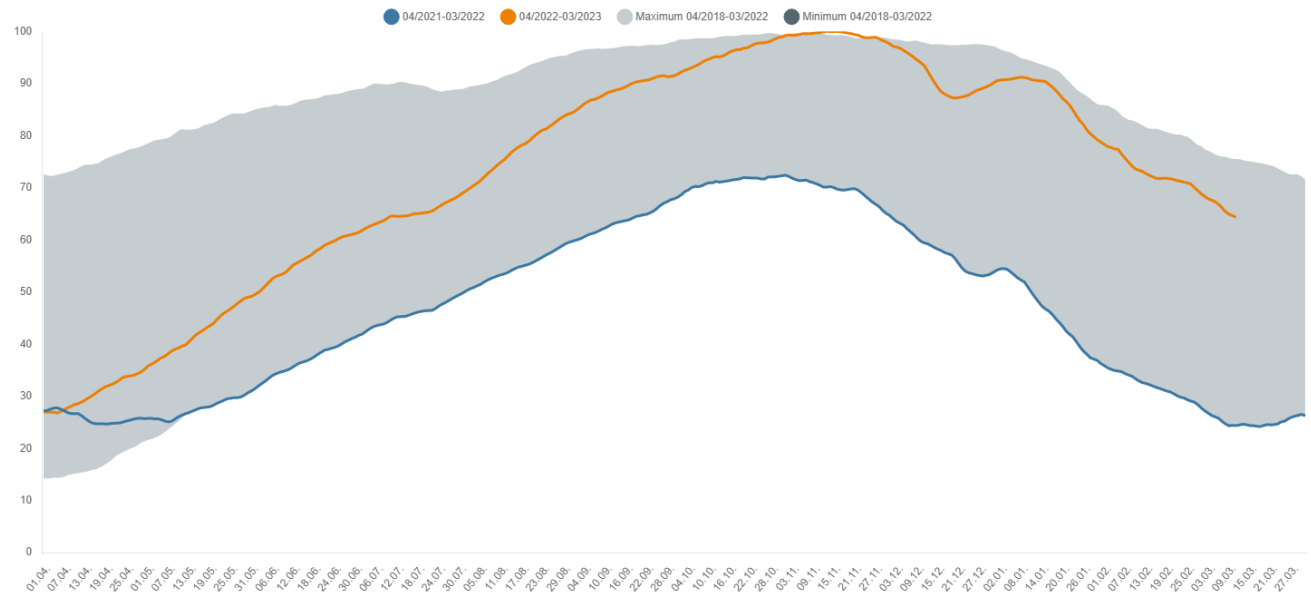


1.3 Gas production in Germany (GWh/day)

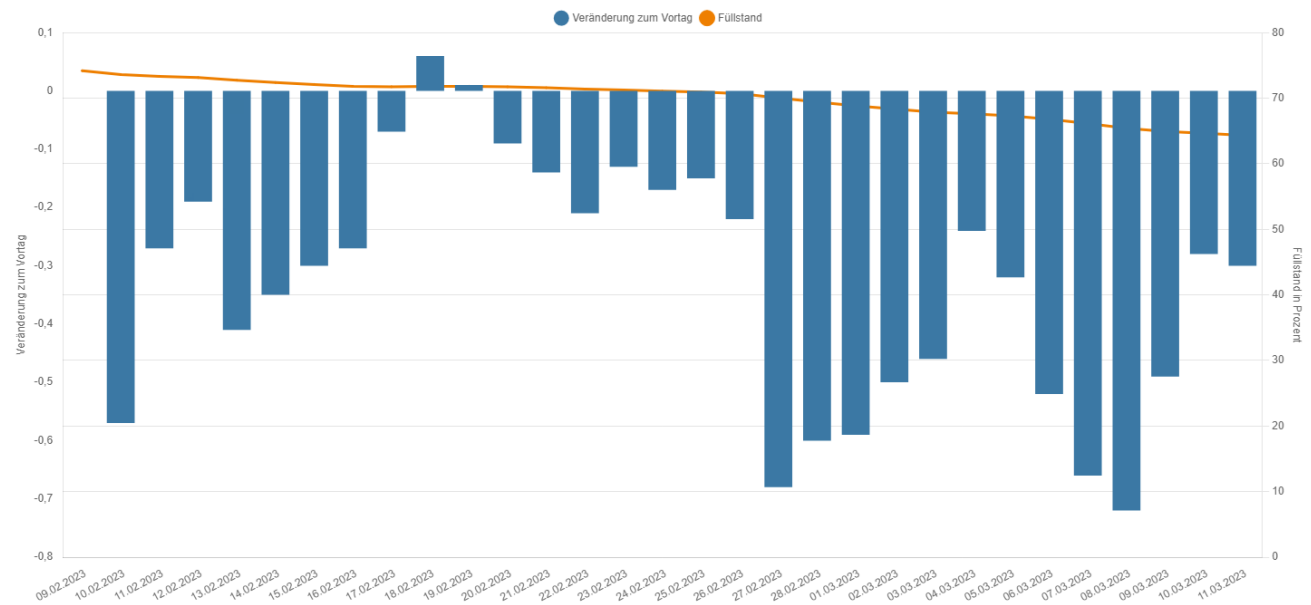


2. Storage levels in Germany

2.1 Development of storage levels in Germany (%)

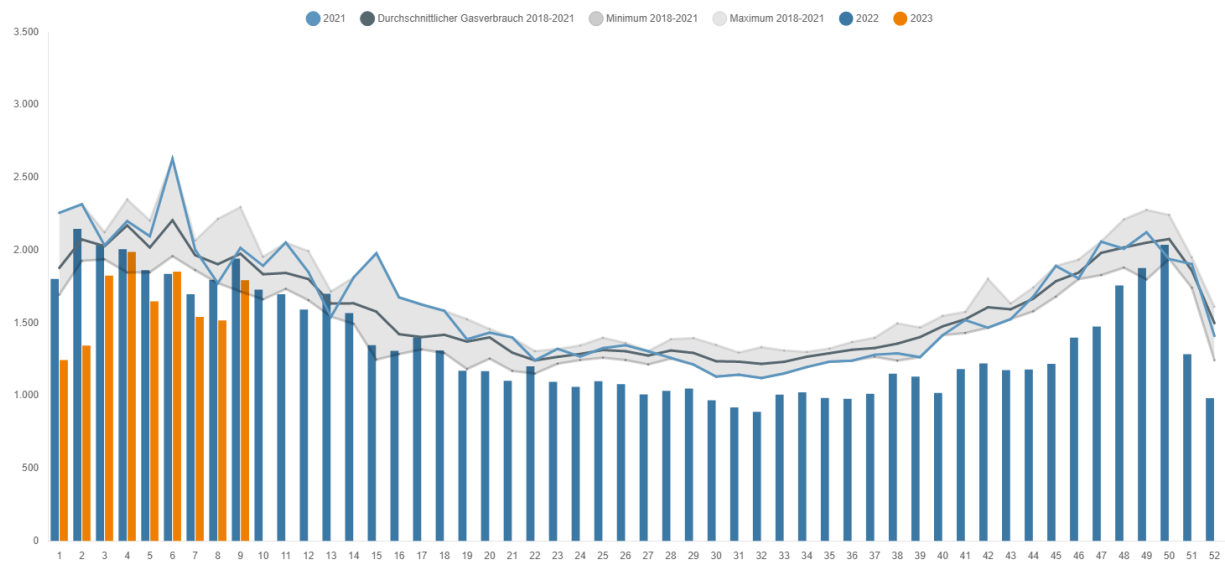


2.2 Gas storage levels in Germany: daily storage level and change in storage levels (percentage points)

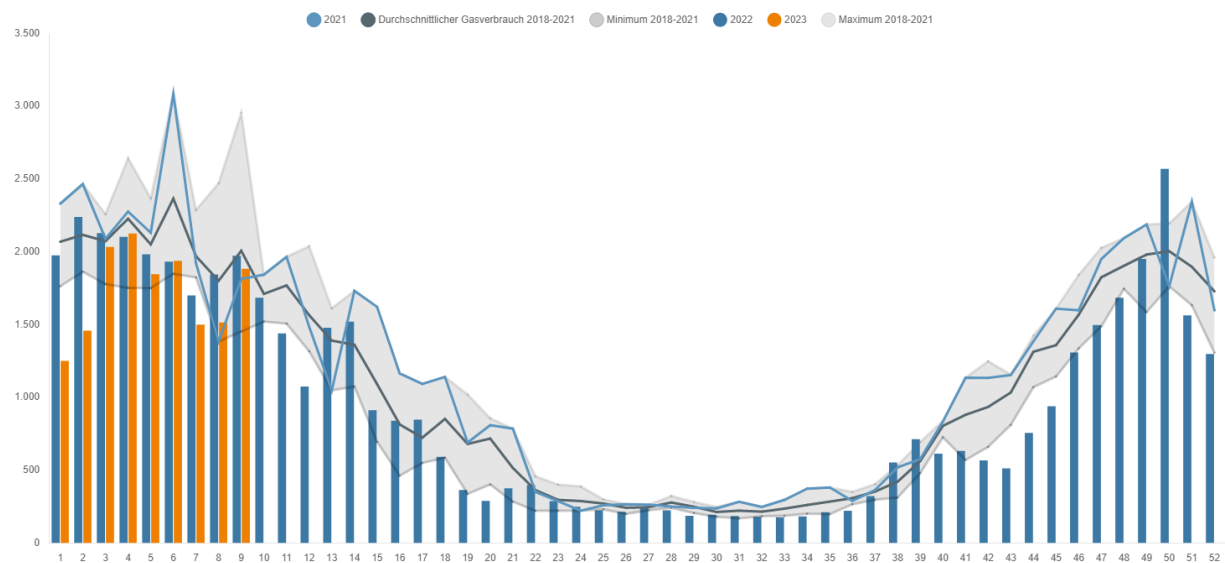


3. Consumption of natural gas

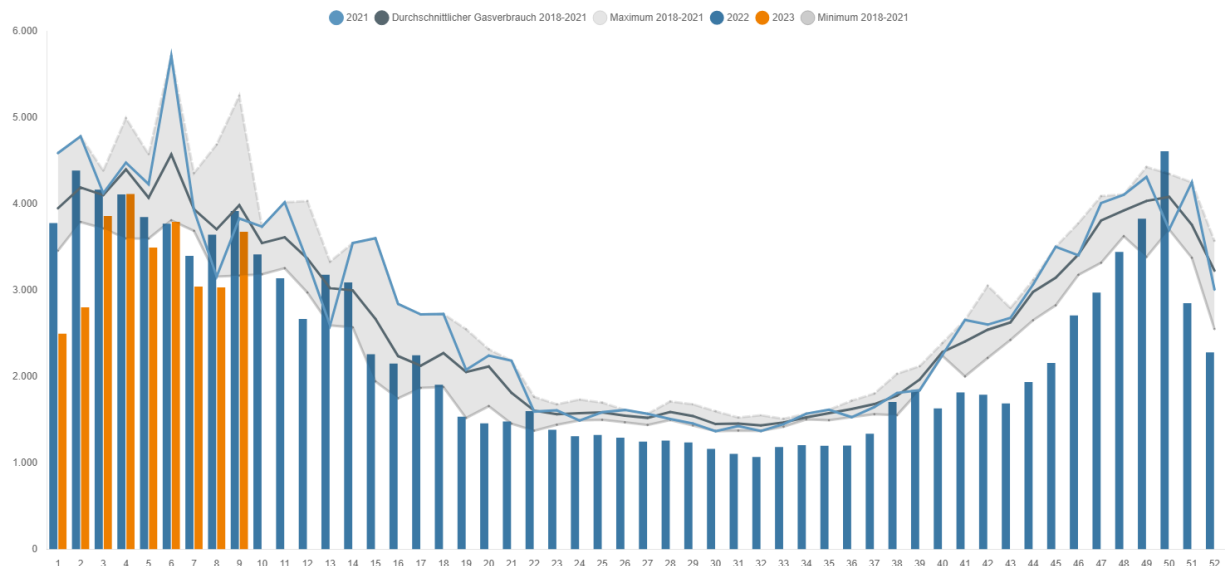
3.1 Gas consumption of industrial customers (weekly average) (GWh/day)



3.2 Gas consumption of household and commercial customers (weekly average) (GWh/day)

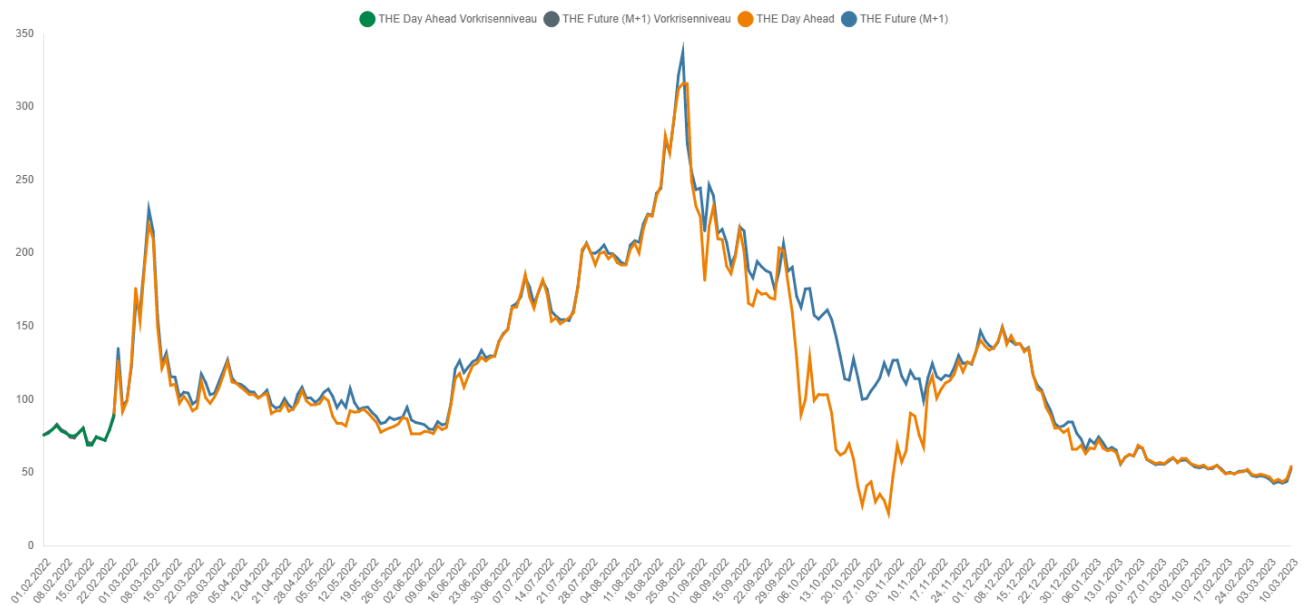


3.3 Gas consumption in Germany (weekly average) (GWh/day)



4. Gas price

4.1 Wholesale gas prices (€/MWh)



Contact

Explanations of the charts and further information and data on current gas supply can be found here:
www.bnetza.de/current-gassupply

If you have any questions or comments on the status report, please contact:
pressestelle@bnetza.de

This report does not constitute a determination by the Bundesnetzagentur within the meaning of section 24(1) sentence 1 of the German Energy Security of Supply Act (EnSiG).