



The charts below show only a selection of the most important data on the gas supply. Further data with interactive charts and additional information may be found (in German) online at:

www.bundesnetzagentur.de/aktuelle-gasversorgung

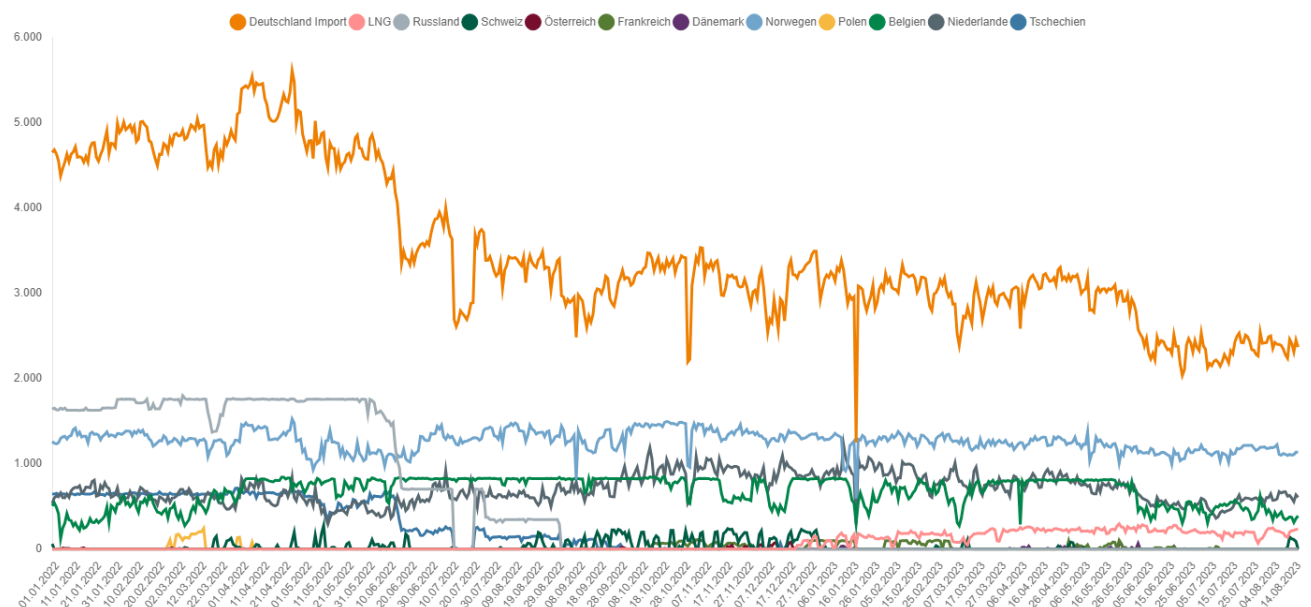
Gas supply status report

As at: 1pm, 17 August 2023

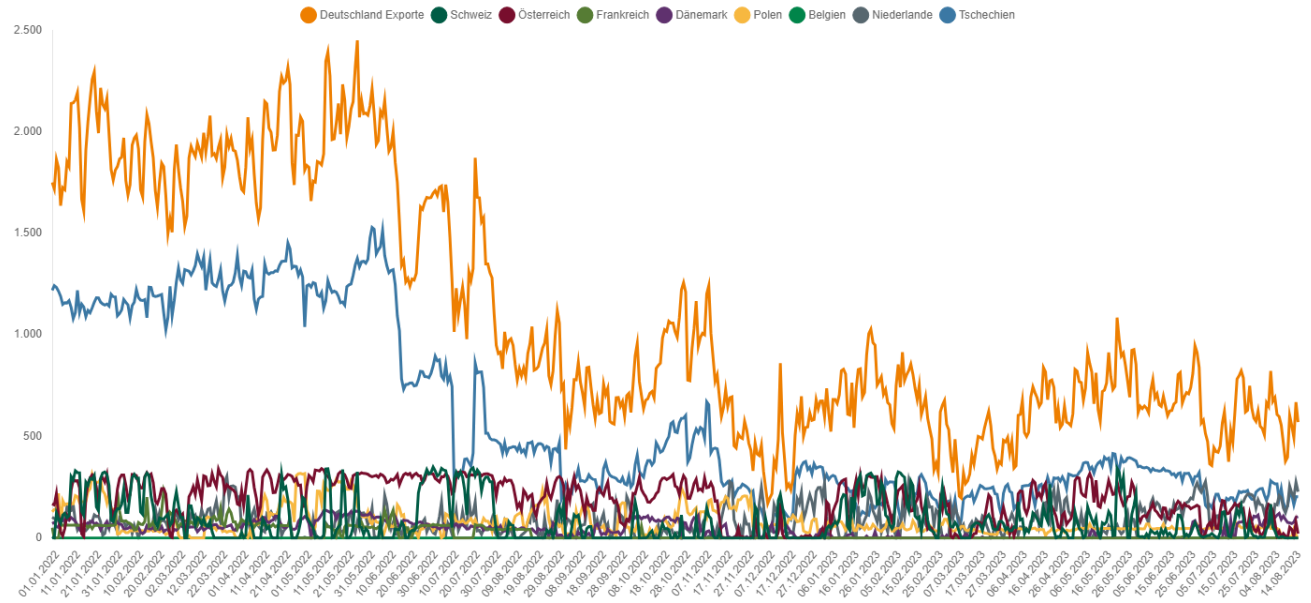
- The alert level of the gas emergency plan has been in place since 23 June 2022. The Bundesnetzagentur is monitoring the situation carefully and is in close contact with the system operators.
- The gas supply in Germany is stable. The security of supply is safeguarded. It was possible to prevent a gas deficit situation last winter. At the same time, preparing for the 2023/2024 winter is a key challenge. It is therefore still important to save gas.
- Gas flows to Germany are stable and balanced.
- To secure the gas supply for next winter, there must be a storage level of 75% by 1 September. In June this target level has already been reached.
- Gas consumption in the week beginning 7 August 2023 was 13.38% below the average consumption for 2018 to 2021 and up by 5.43% compared with the week before.
- Wholesale prices have increased slightly in the last few weeks. Businesses and private consumers must continue to adapt to fluctuating prices and a higher price level.

1. Gas flows

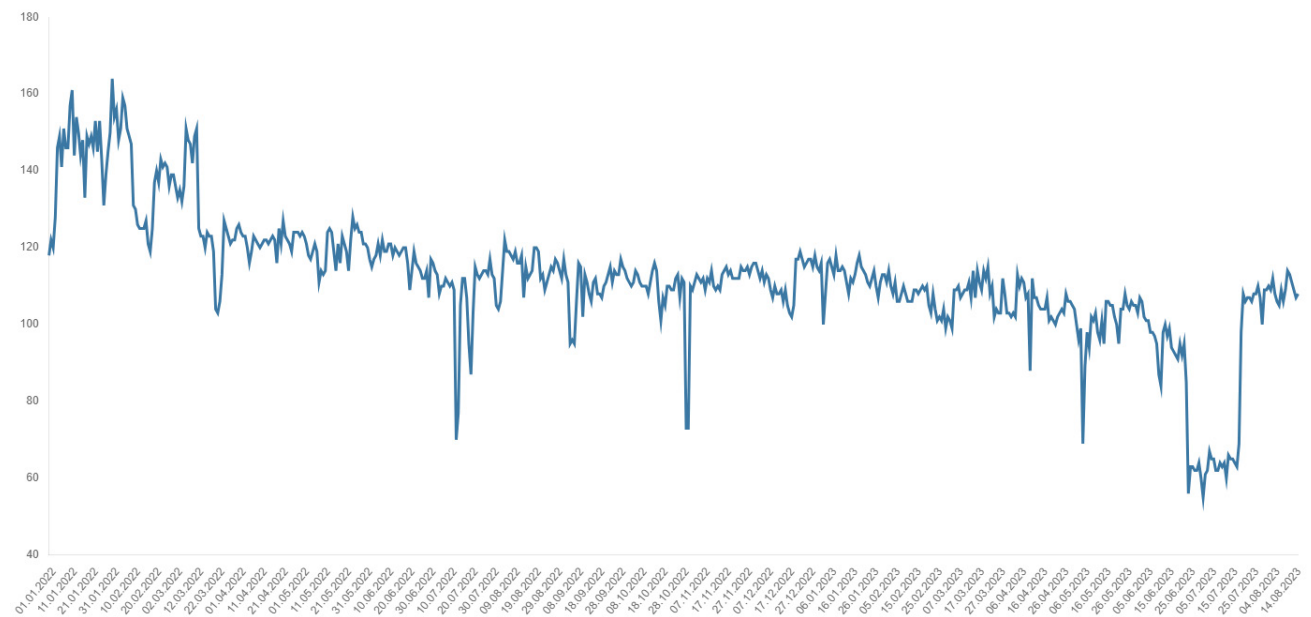
1.1 Gas imports (GWh/day)



1.2 Gas exports (GWh/day)



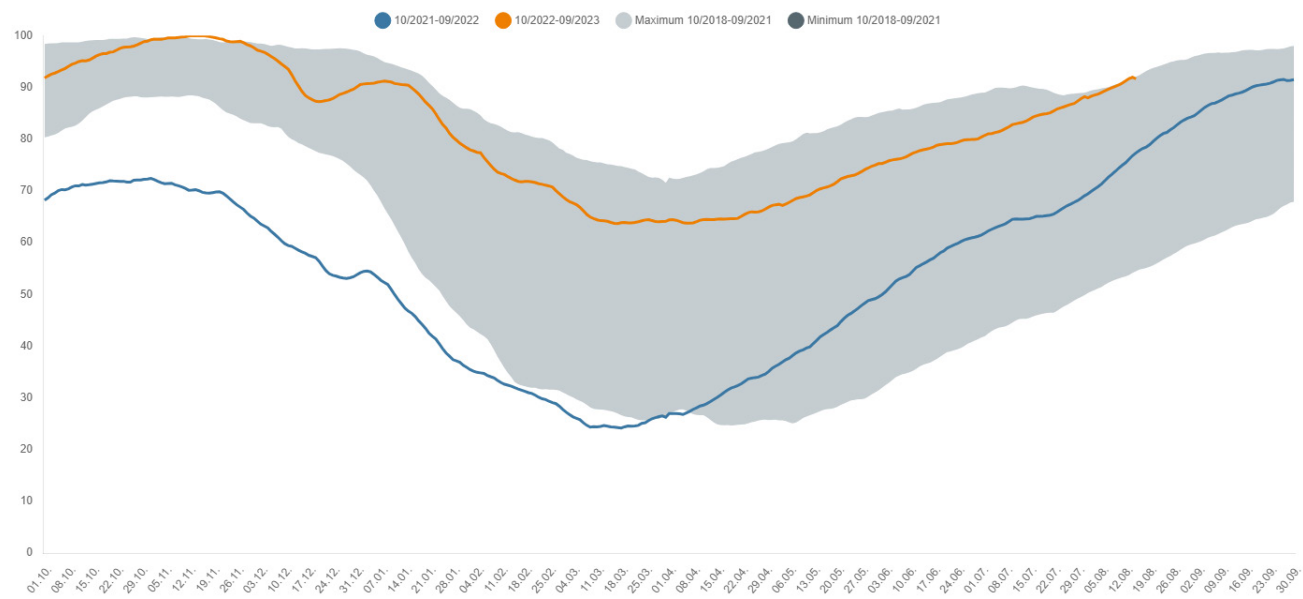
1.3 Gas production in Germany (GWh/day)



2. Storage levels in Germany

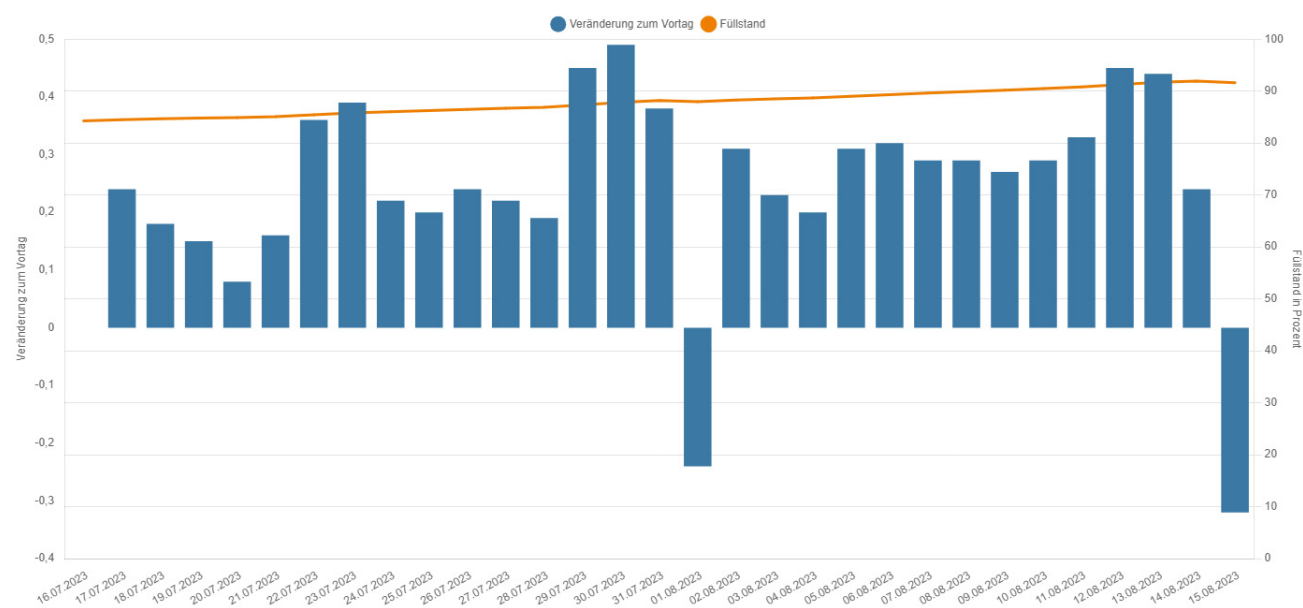
2.1 Development of storage levels in Germany

(%)



2.2 Gas storage levels in Germany: daily storage level and change in storage levels*

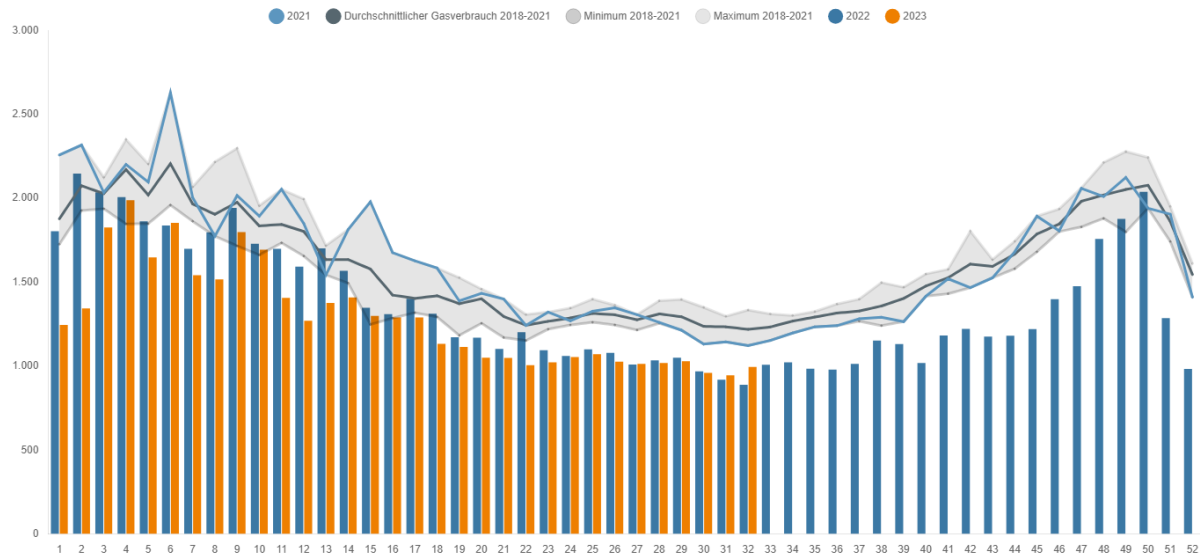
(percentage points)



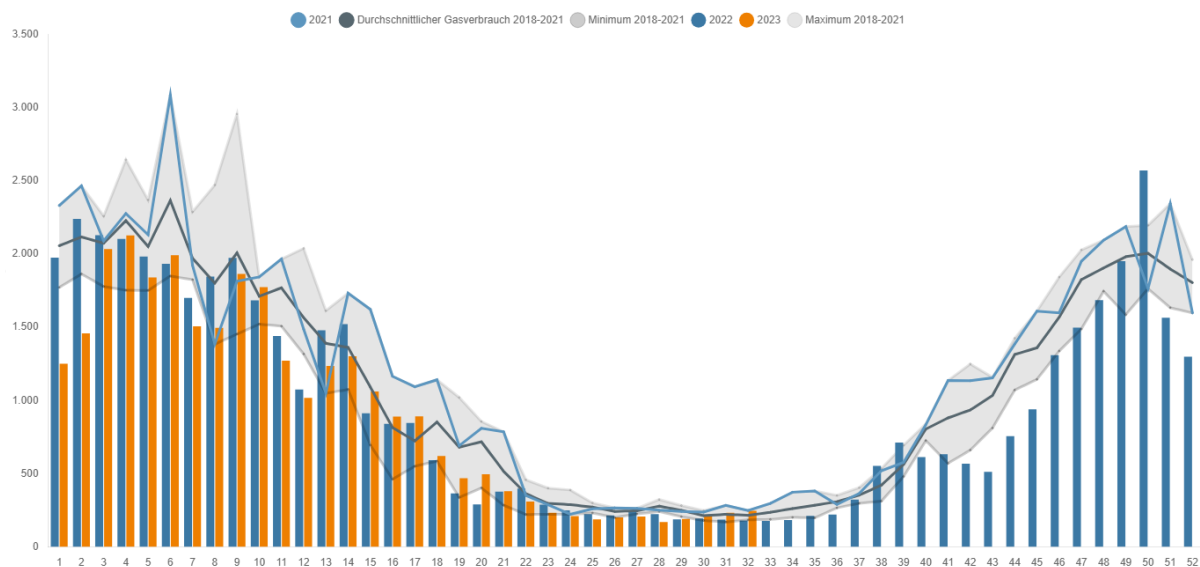
* The figures are provisional.

3. Consumption of natural gas

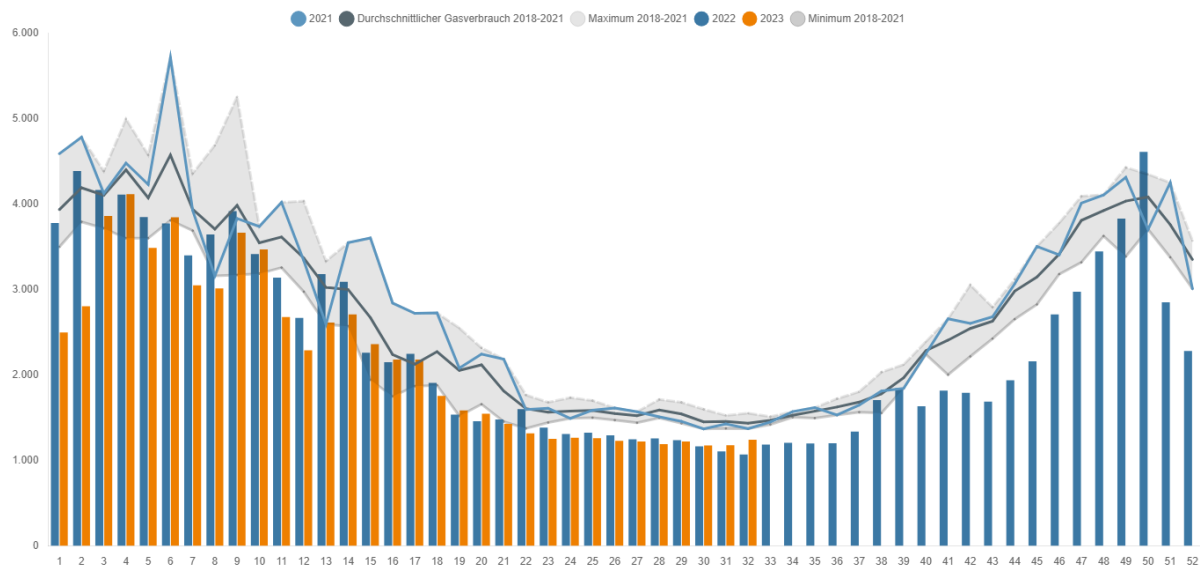
3.1 Gas consumption of industrial customers (weekly average) (GWh/day)



3.2 Gas consumption of household and commercial customers (weekly average) (GWh/day)

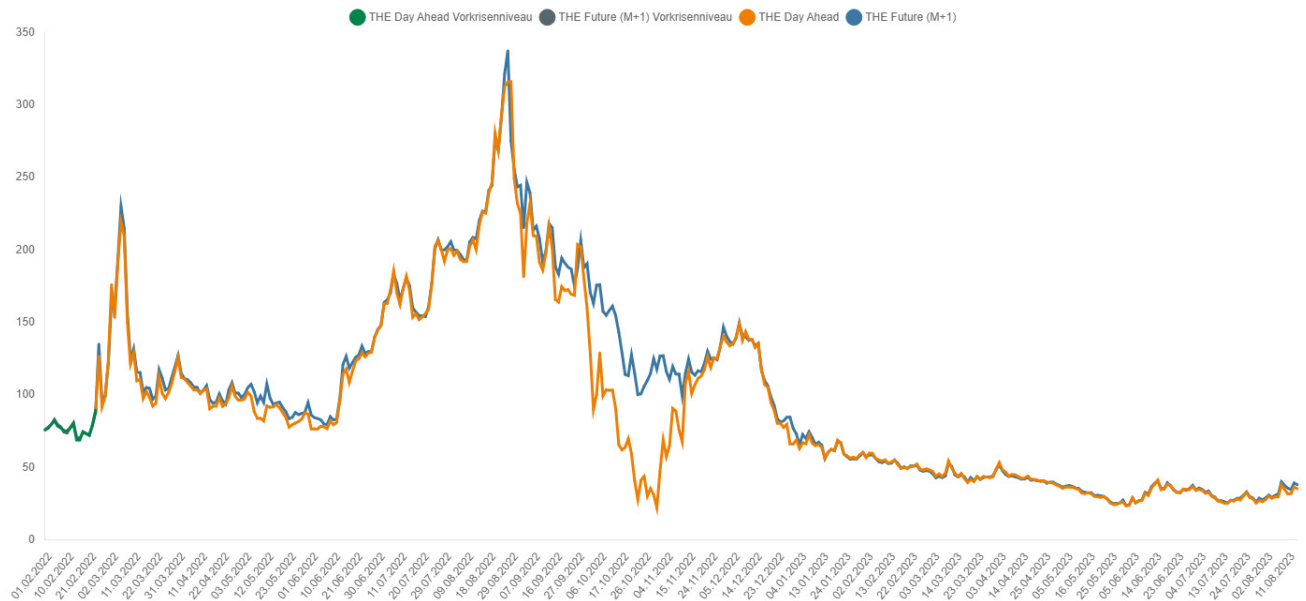


3.3 Gas consumption in Germany (weekly average) (GWh/day)



4. Gas price

4.1 Wholesale gas prices (€/MWh)



Contact

Explanations of the charts and further information and data on current gas supply can be found here:
www.bnetza.de/current-gassupply

If you have any questions or comments on the status report, please contact:
pressestelle@bnetza.de

This report does not constitute a determination by the Bundesnetzagentur within the meaning of section 24(1) sentence 1 of the German Energy Security of Supply Act (EnSiG).