



The charts below show only a selection of the most important data on the gas supply. Further data with interactive charts and additional information may be found (in German) online at:

www.bundesnetzagentur.de/aktuelle-gasversorgung

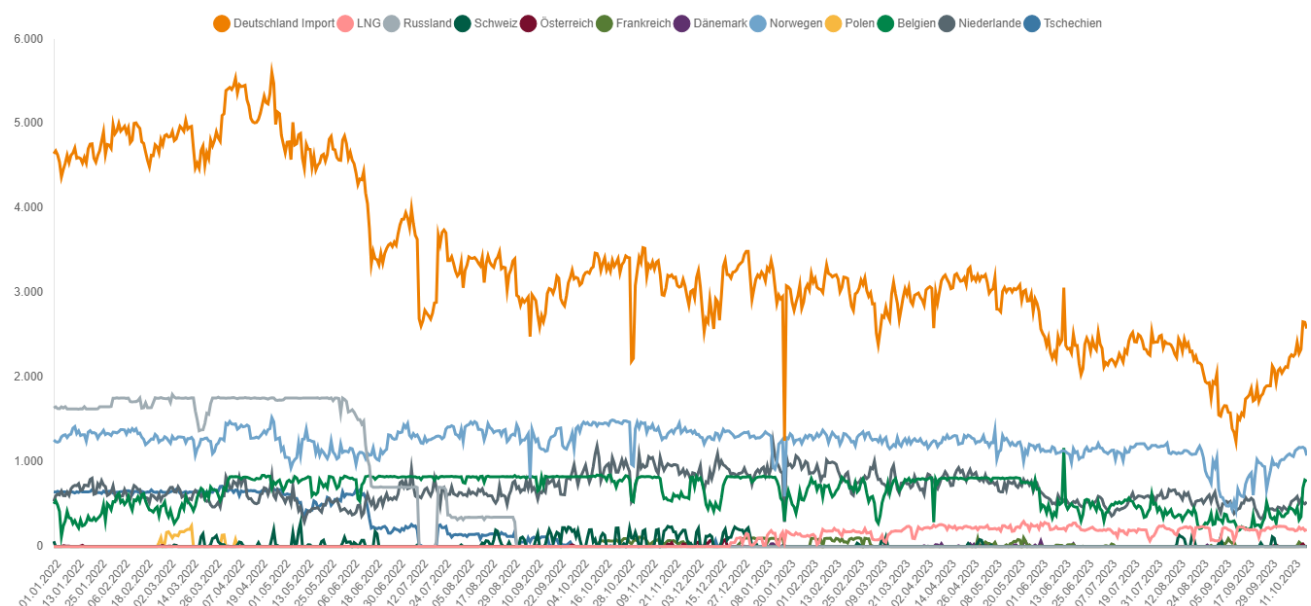
Gas supply status report

As at: 1pm, 19 October 2023

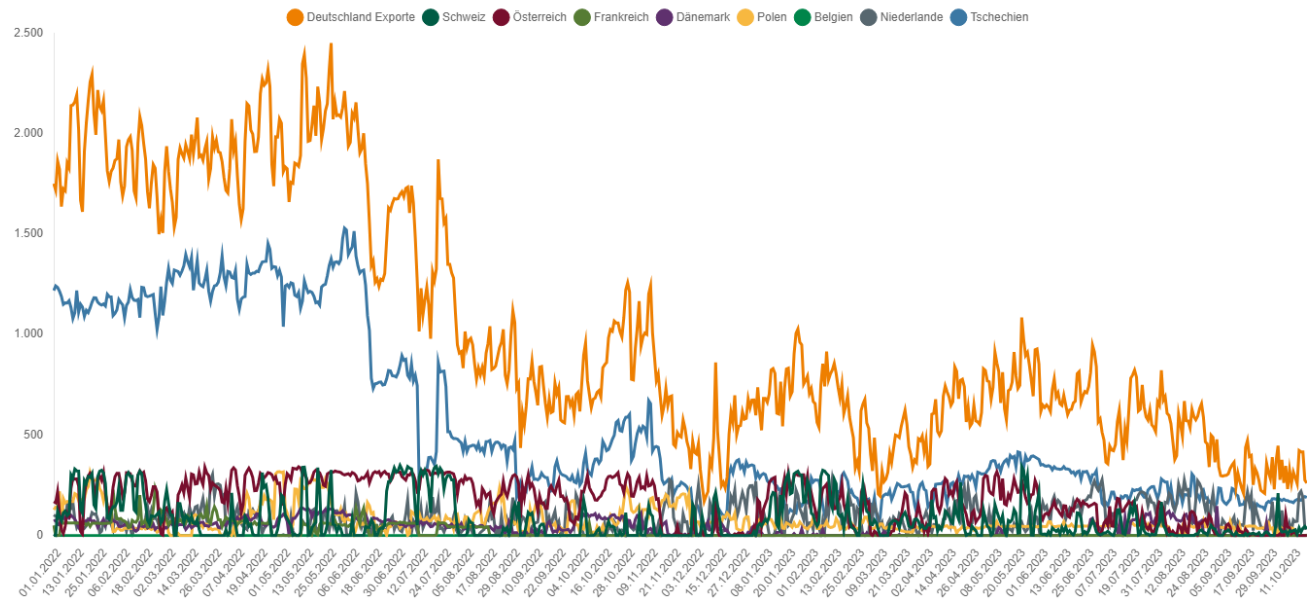
- The alert level of the gas emergency plan has been in place since 23 June 2022. The Bundesnetzagentur is monitoring the situation carefully and is in close contact with the system operators.
- The gas supply in Germany is stable. The security of supply is safeguarded. The starting point for winter 2023/24 is considerably better than a year ago, but some residual risks remain. The need to save gas is still important.
- Gas flows to Germany are stable and balanced.
- To secure the gas supply for this winter, there must be a storage level of 95% by 1 November. This target has now already been met at the end of September.
- Gas consumption in the week beginning 9 October 2023 was 32.6% below the average consumption for 2018 to 2021 and up by 12.7% compared with the week before.
- Wholesale prices have recently risen again slightly. Businesses and private consumers must continue to adapt to fluctuating prices and a higher price level.
- In the Bundesnetzagentur's view, the events involving the Balticconnector pipeline have no direct impact on the gas supply in Germany.

1. Gas flows

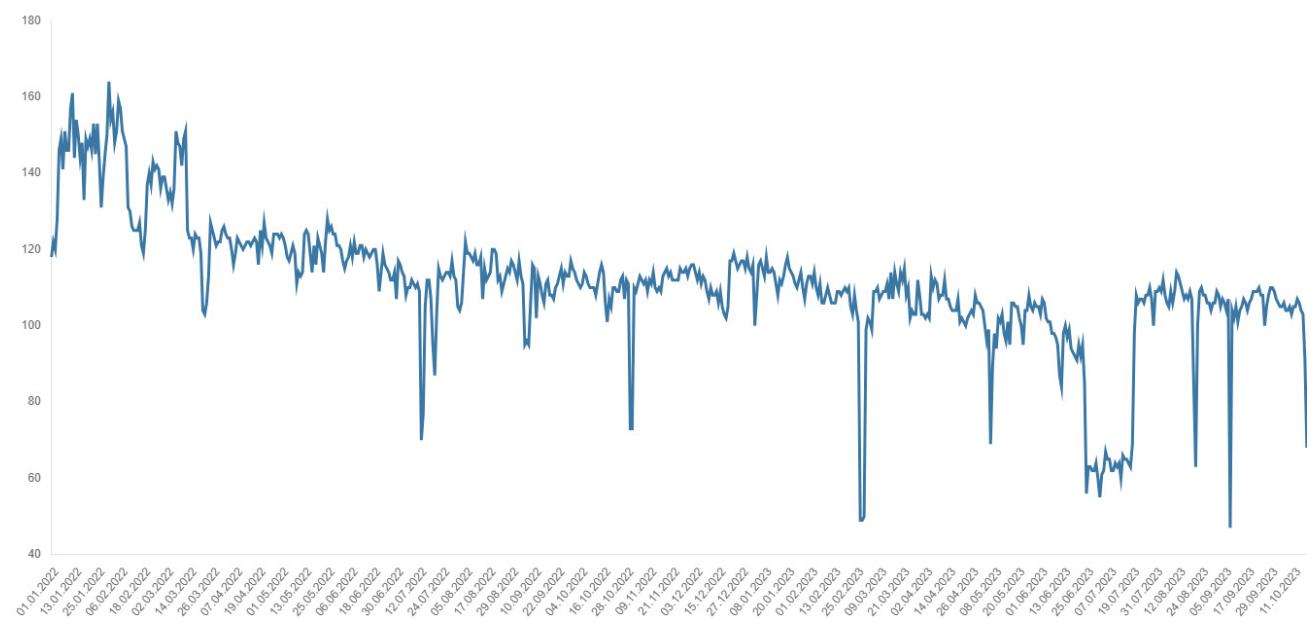
1.1 Gas imports (GWh/day)



1.2 Gas exports (GWh/day)

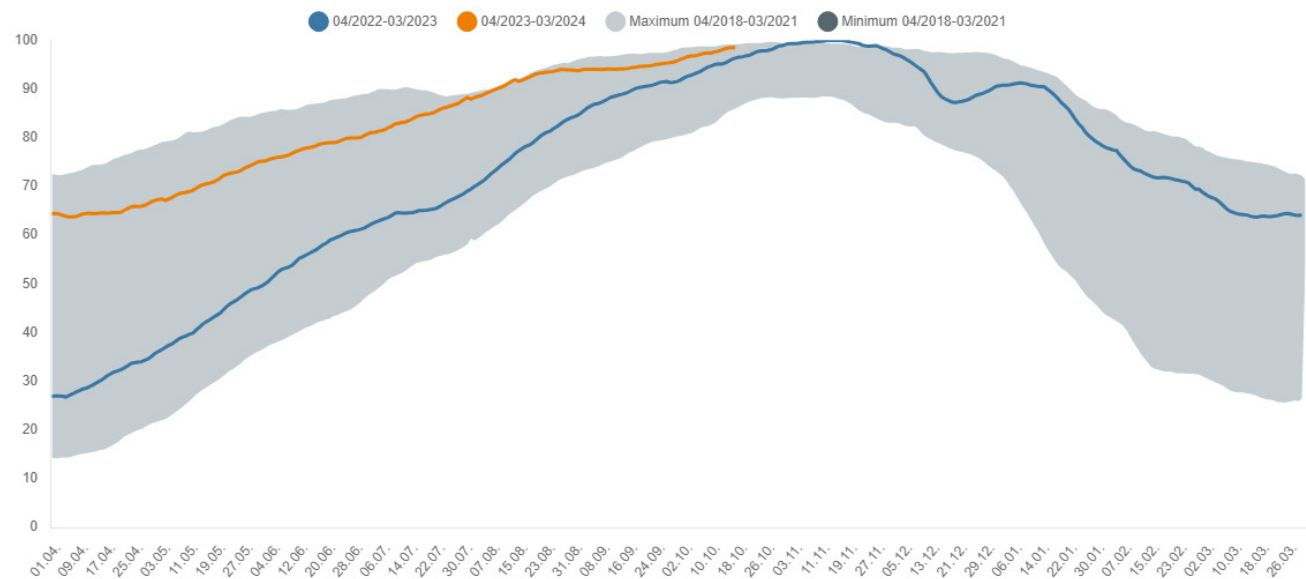


1.3 Gas production in Germany (GWh/day)

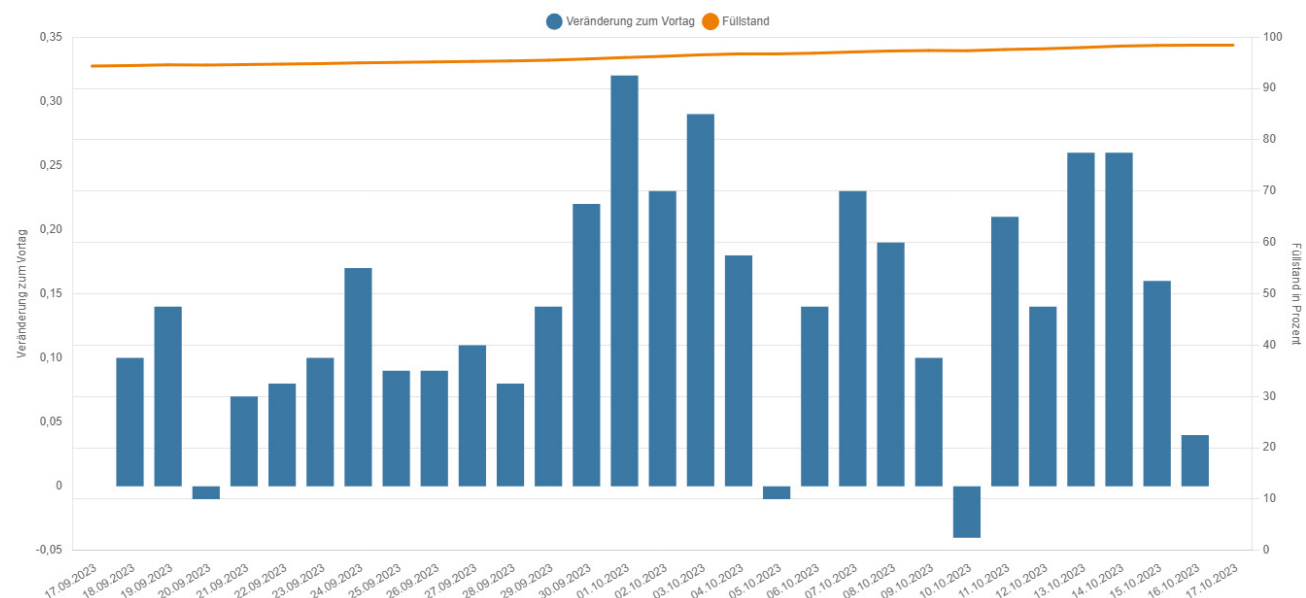


2. Storage levels in Germany

2.1 Development of storage levels in Germany (%)



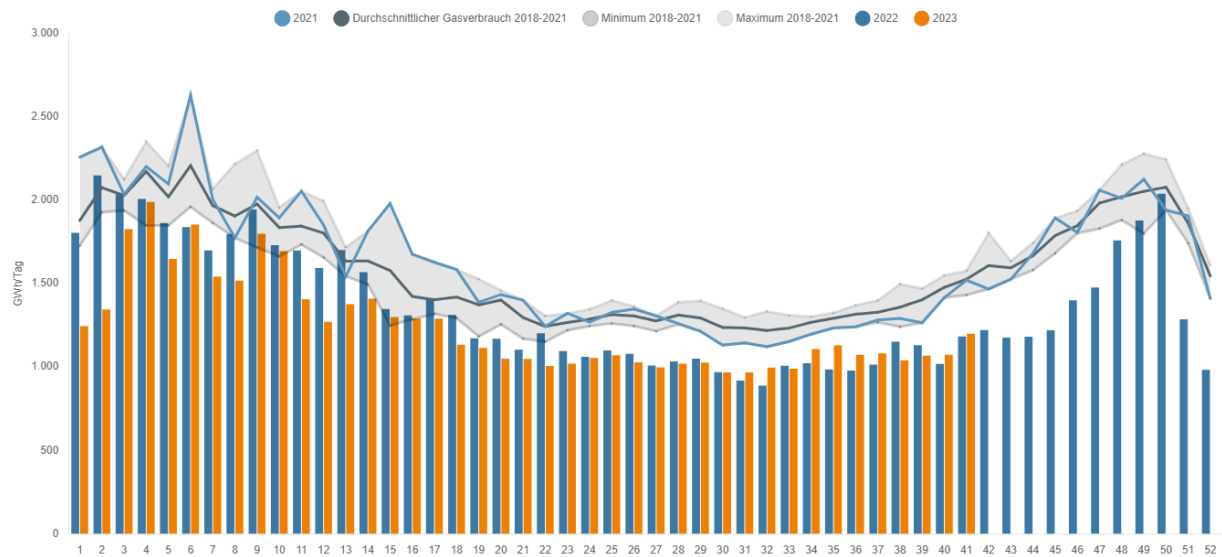
2.2 Gas storage levels in Germany: daily storage level and change in storage levels (percentage points)



3. Consumption of natural gas

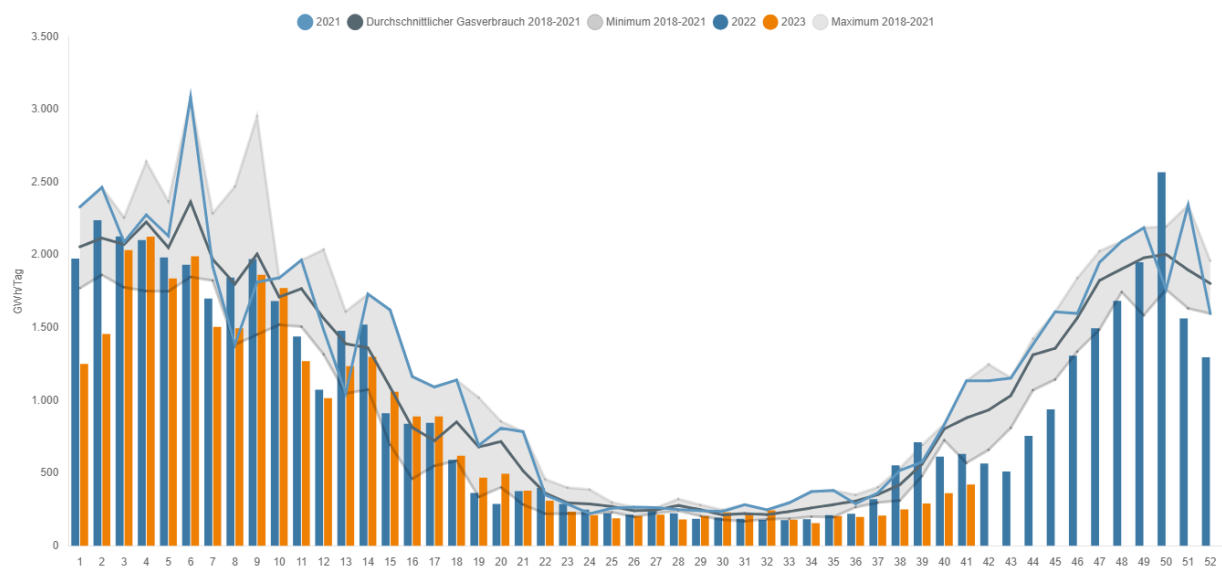
3.1 Gas consumption of industrial customers (weekly average)

(GWh/day)



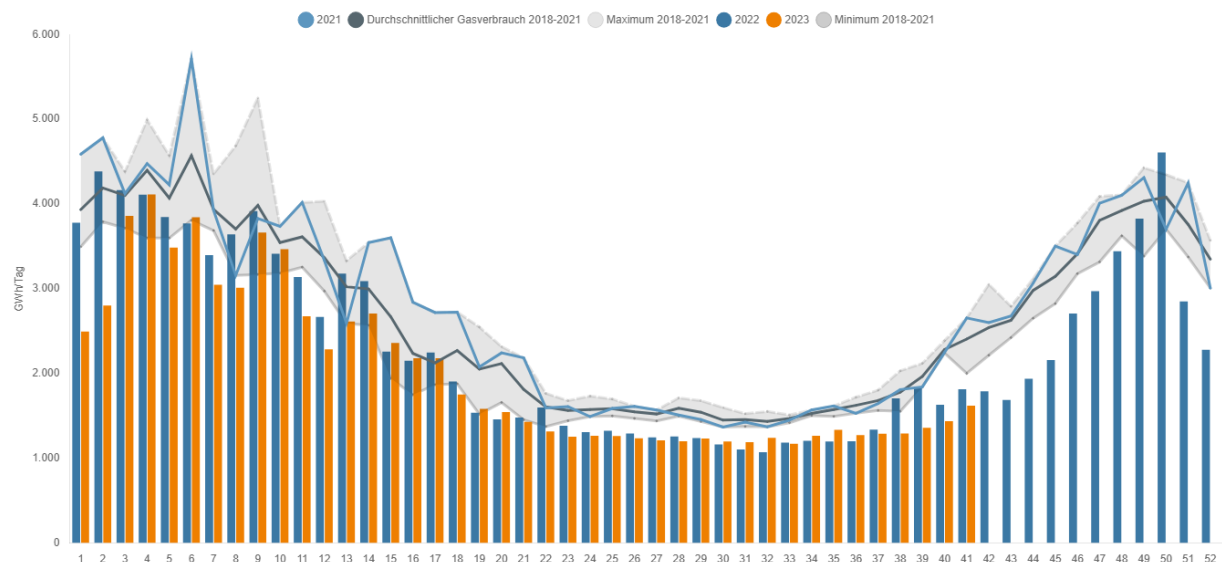
3.2 Gas consumption of household and commercial customers (weekly average)

(GWh/day)



3.3 Gas consumption in Germany (weekly average)

(GWh/day)



4. Gas price

4.1 Wholesale gas prices

(€/MWh)



Contact

Explanations of the charts and further information and data on current gas supply can be found here:

www.bnetza.de/current-gassupply

All data are regarded as provisional and may be changed retroactively.

If you have any questions or comments on the status report, please contact:

pressestelle@bnetza.de

This report does not constitute a determination by the Bundesnetzagentur within the meaning of section 24(1) sentence 1 of the German Energy Security of Supply Act (EnSiG).